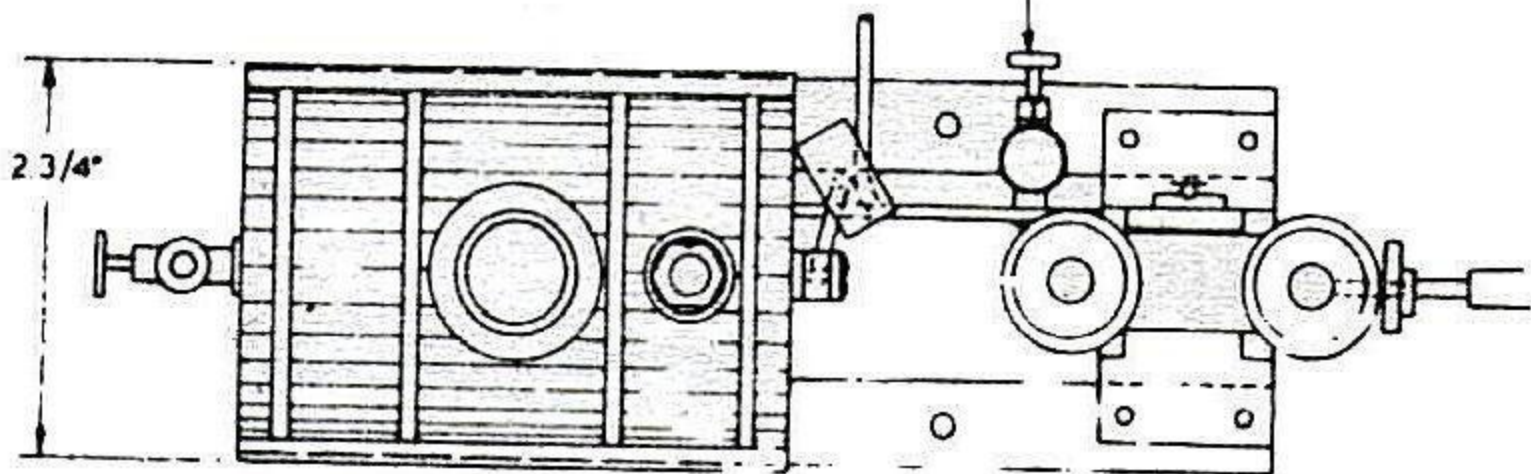
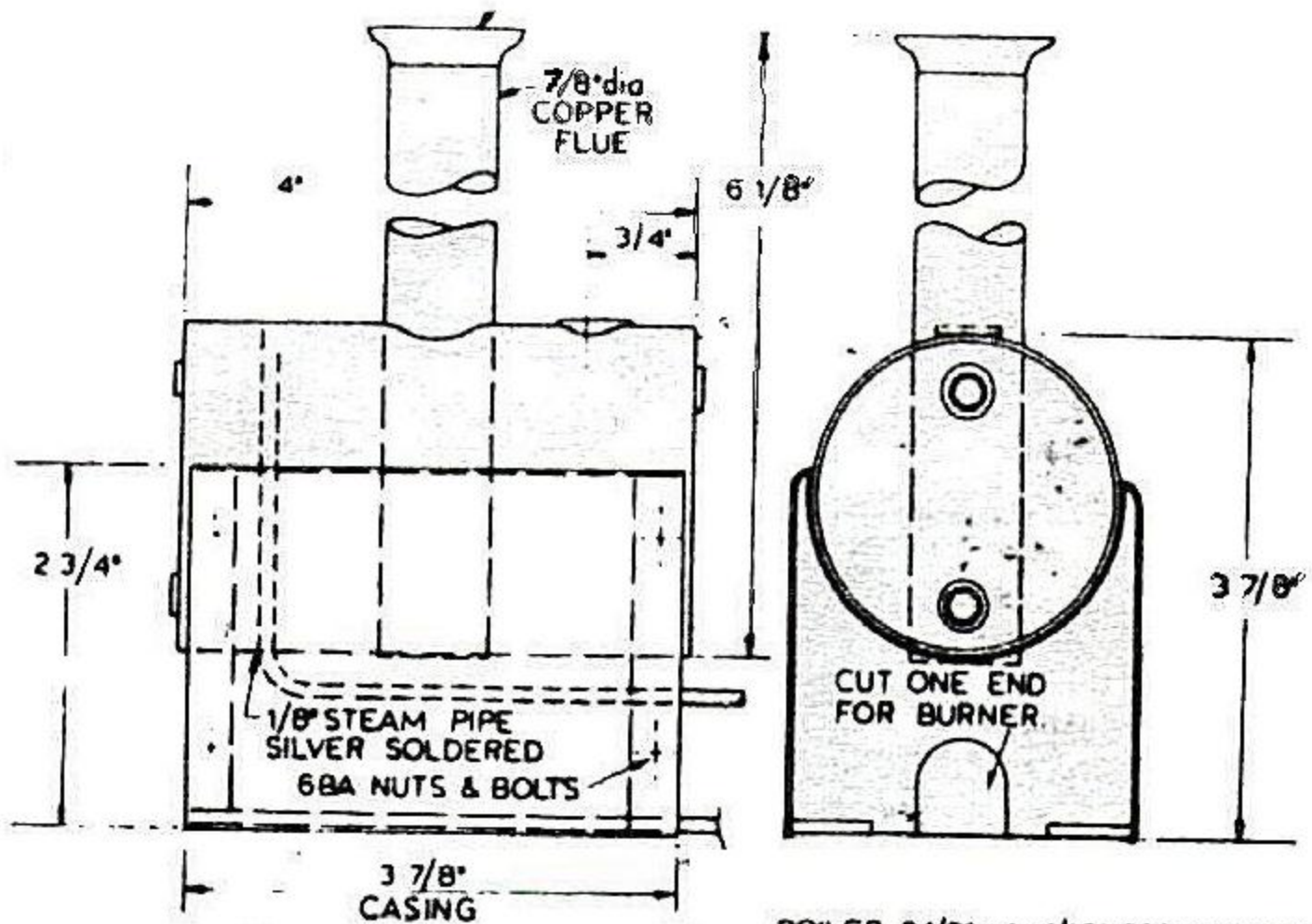


DISPLACEMENT LUBRICATOR IN STEAM PIPE
(OMITTED FROM ELEVATION FOR CLARITY)

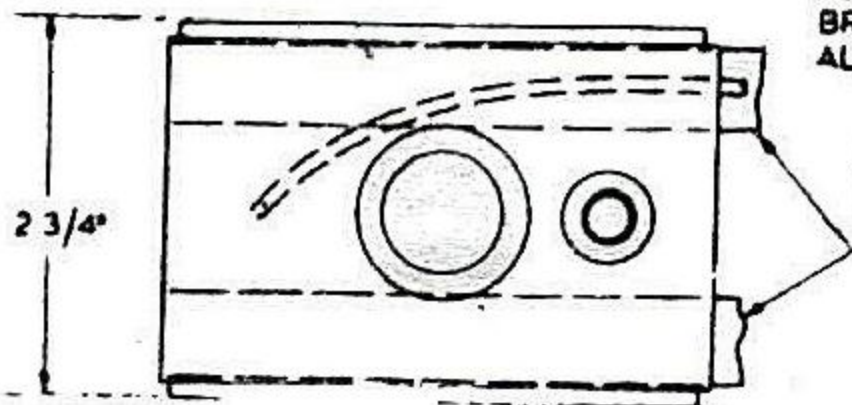


GENERAL ARRANGEMENT OF ENGINE & BOILER

BRASS FUNNEL TOP



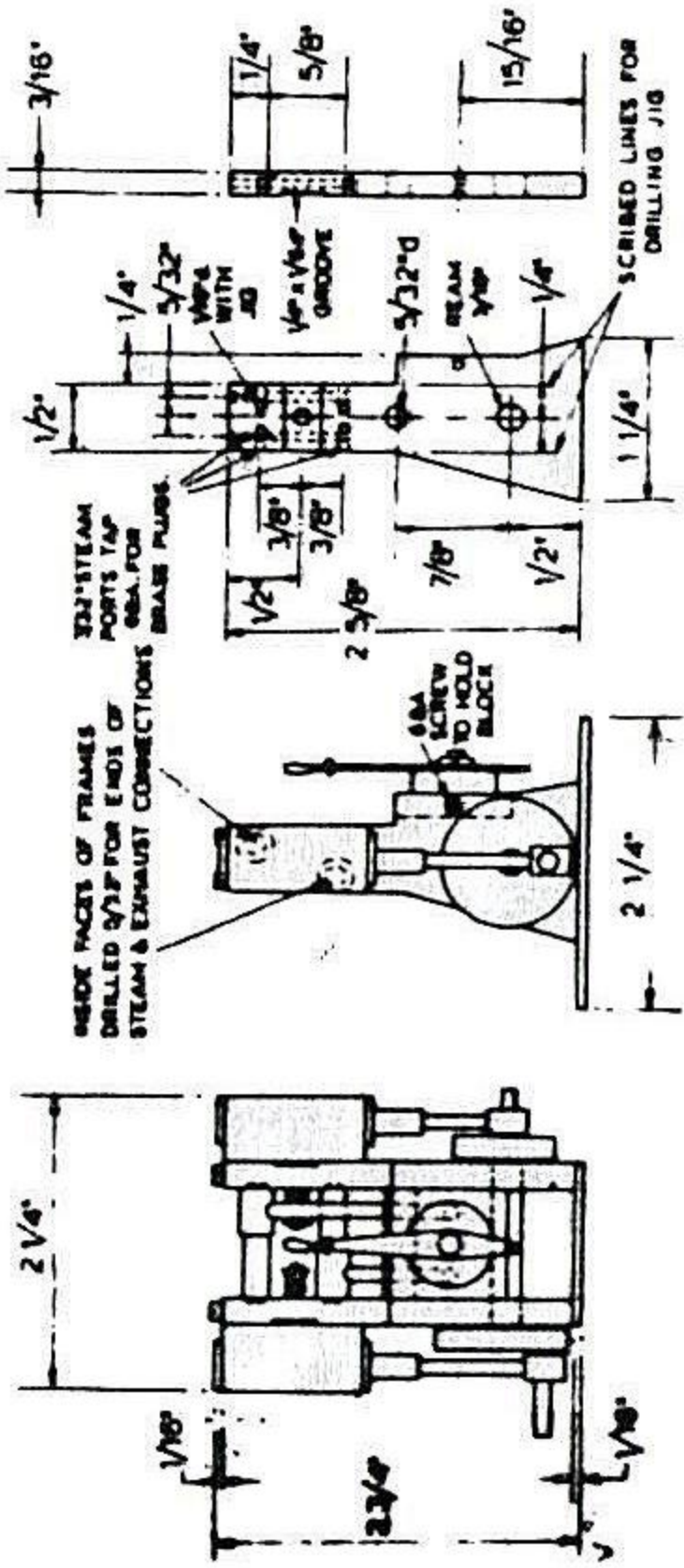
BOILER 2 1/2" od x 1/16" COPPER TUBE
 FLANGED ENDS 18g COPPER.
 BRASS BUSHES TO SUIT FITTINGS.
 ALL SILVER SOLDERED



CASING 18g ALUMINIUM
 BOLTED TOGETHER.

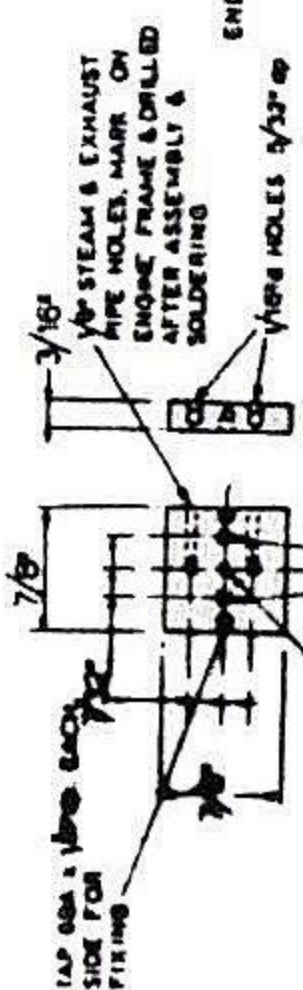
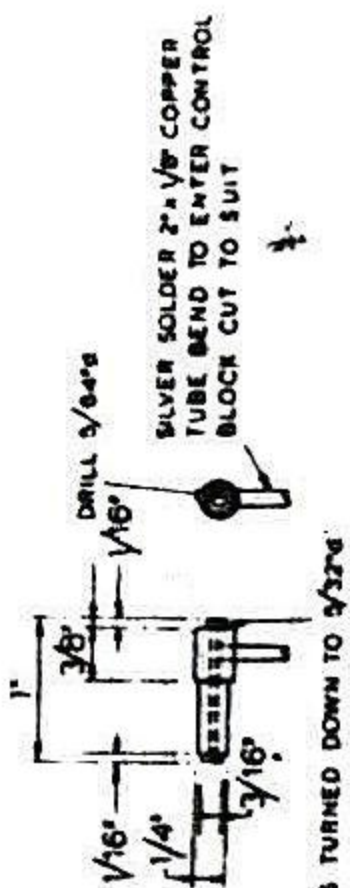
ENGINE BEARERS 5/8" x 1/8" x 7 1/2" lg

BOILER & CASING.

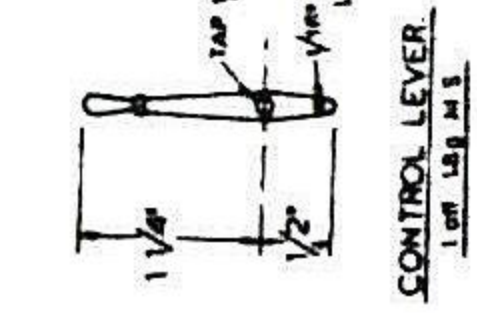
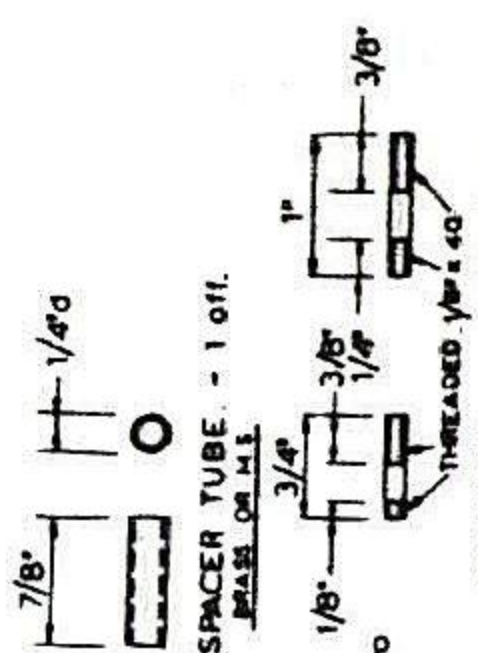


FRAMES
 1.0811 H. 1.0811 R.H.
 M011 BRASS

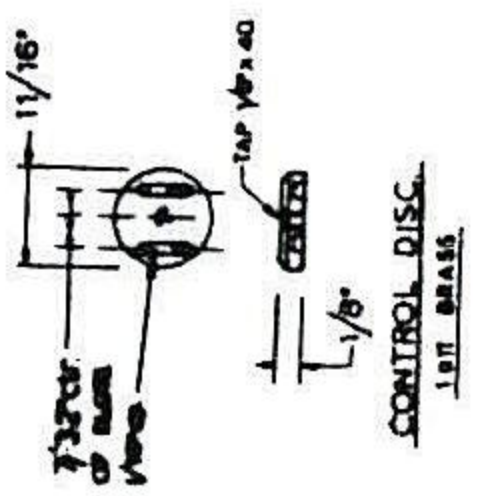
GENERAL ARRGT : ENGINE
TYPE CYLINDER DOUBLE-ACTING 3/16" BORE 1/2" STROKE



I - CONNECTOR TUBES - 2 OFF
BRASS WITH COPPER PIPES

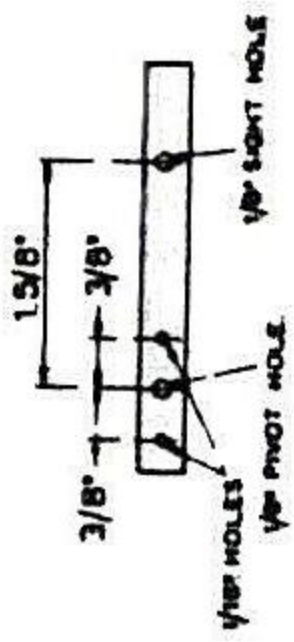


CONTROL BLOCK - 1 OFF
BRASS

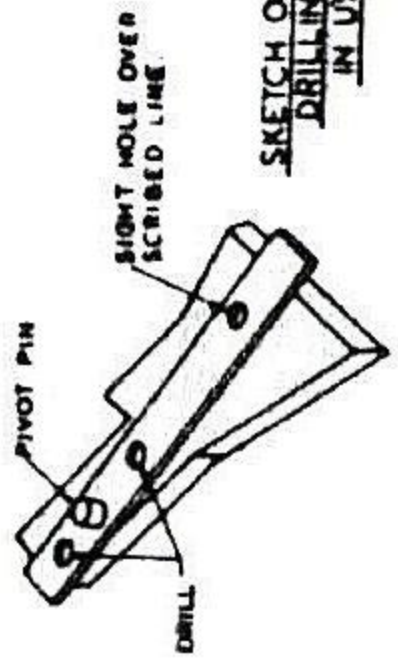


CONTROL LEVER.
1 OFF 1/8 x M.S.

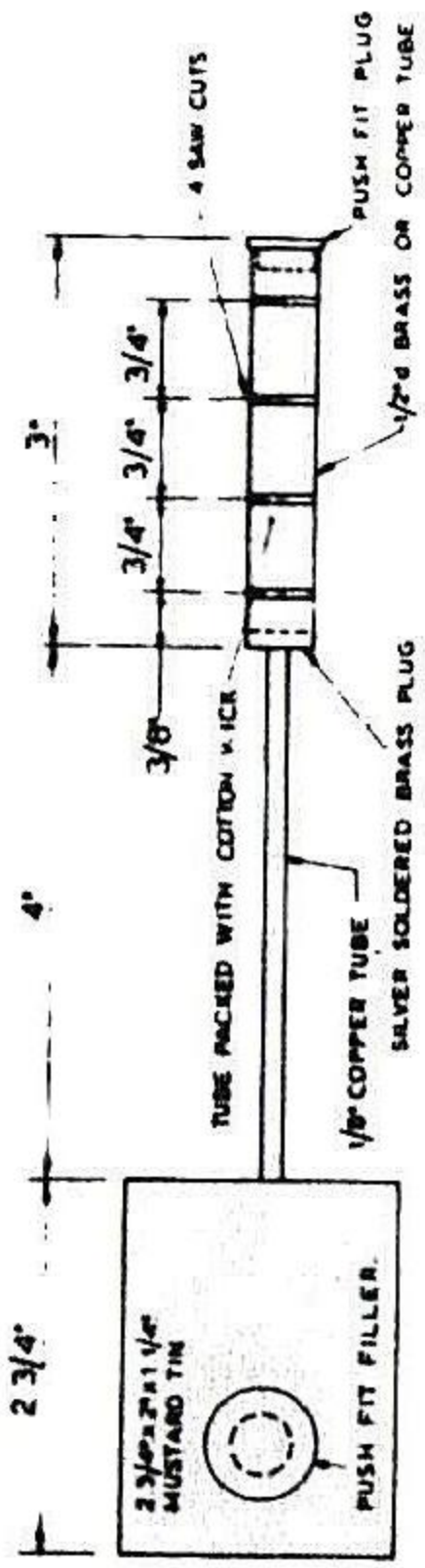
CONTROL PIVOT
1 OFF
1/8 x 1/16
STEEL



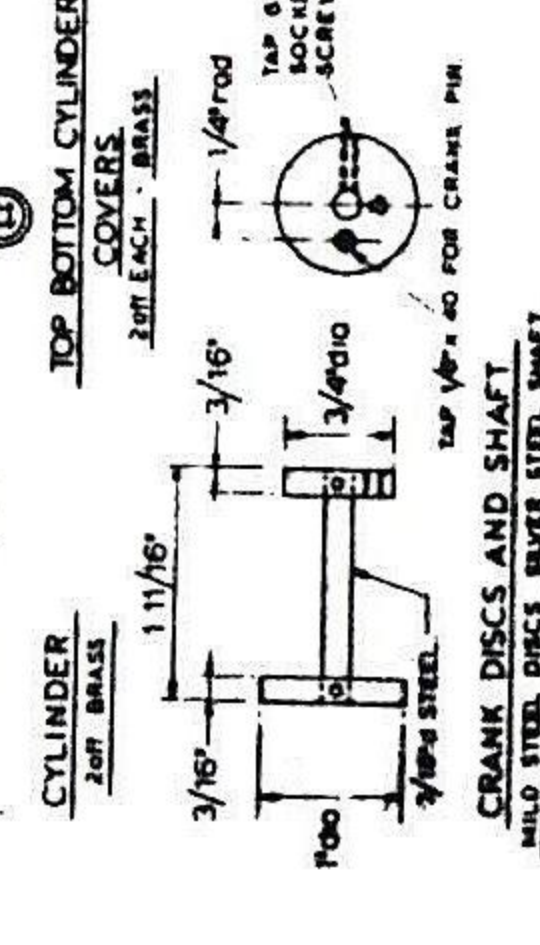
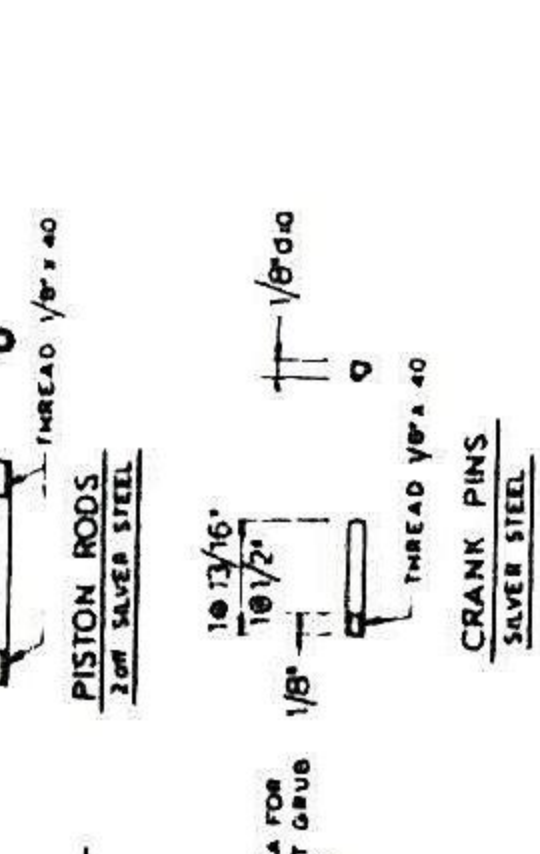
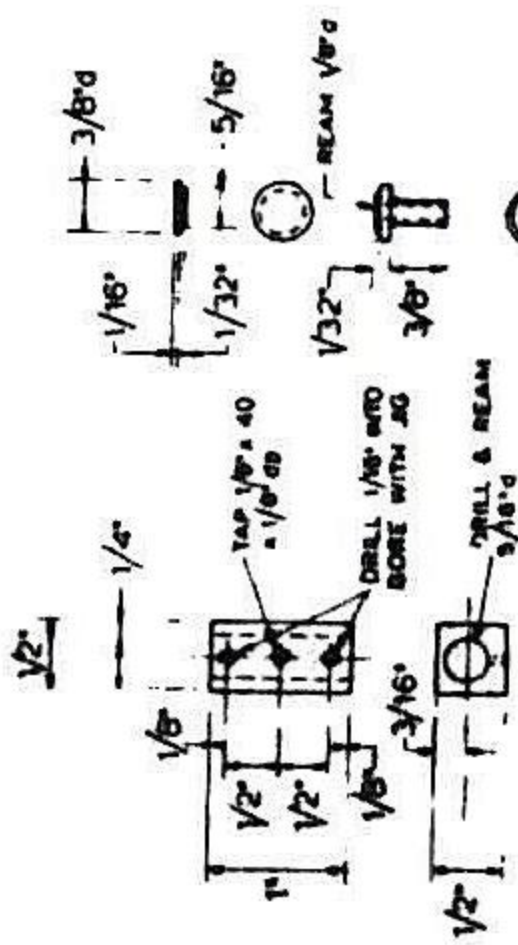
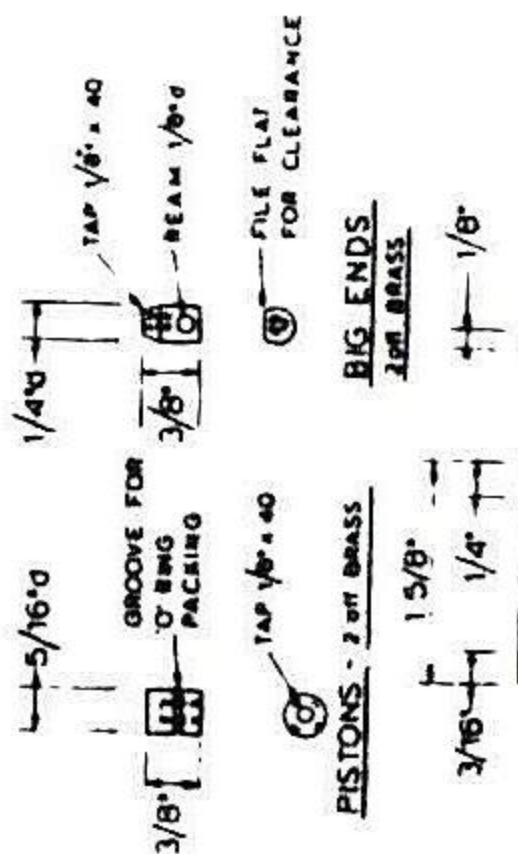
PORT DRILLING JIG.

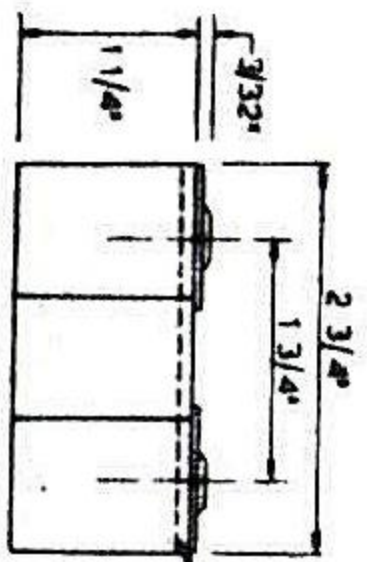


SKETCH OF PORT DRILLING JIG IN USE.



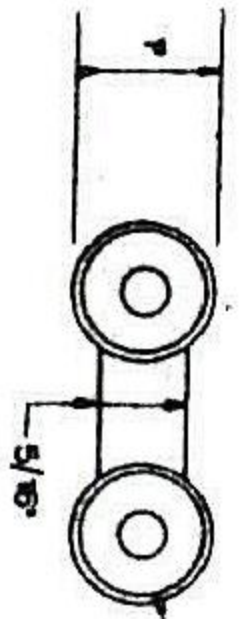
METHYLATED SPIRIT BURNER FOR BOILER - 1 of 1



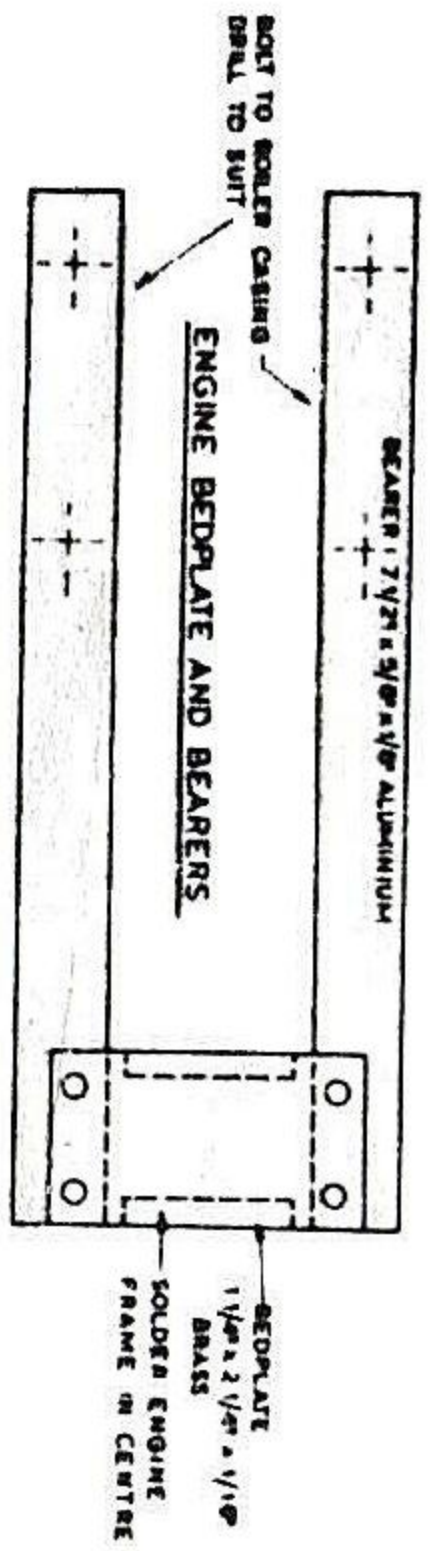


1/16" WOOD FORMER INSIDE

ENGINE COVER - 1011
 TINPLATE SOLDERED WITH
 MANDOLIN STRIPS GLUED ON



ORNAMENTAL "CYLINDER COVERS"
 BRASS EPOXIED ON



BOLT TO SCALER CASING
 DRILL TO SUIT

ENGINE BEDPLATE AND BEARERS

BEARER 1 7/16" x 5/8" x 1/8" ALUMINIUM

BEDPLATE
 1 1/8" x 2 1/4" x 1/16"
 BRASS
 SOLDER ENGINE
 FRAME IN CENTRE