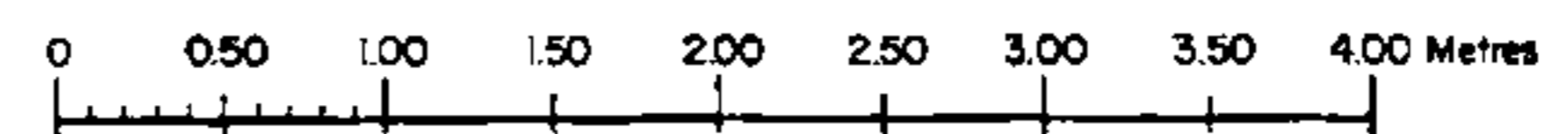
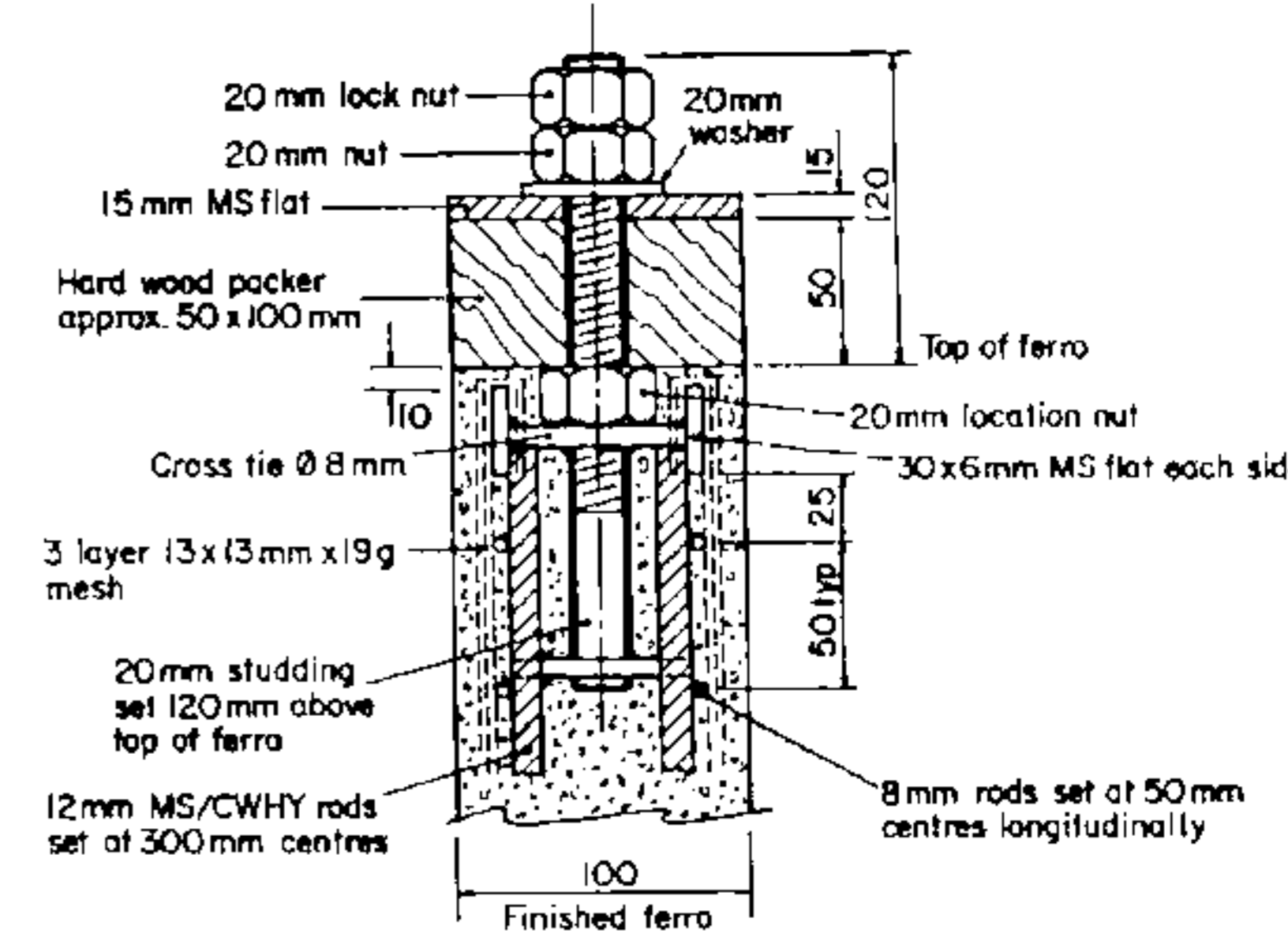
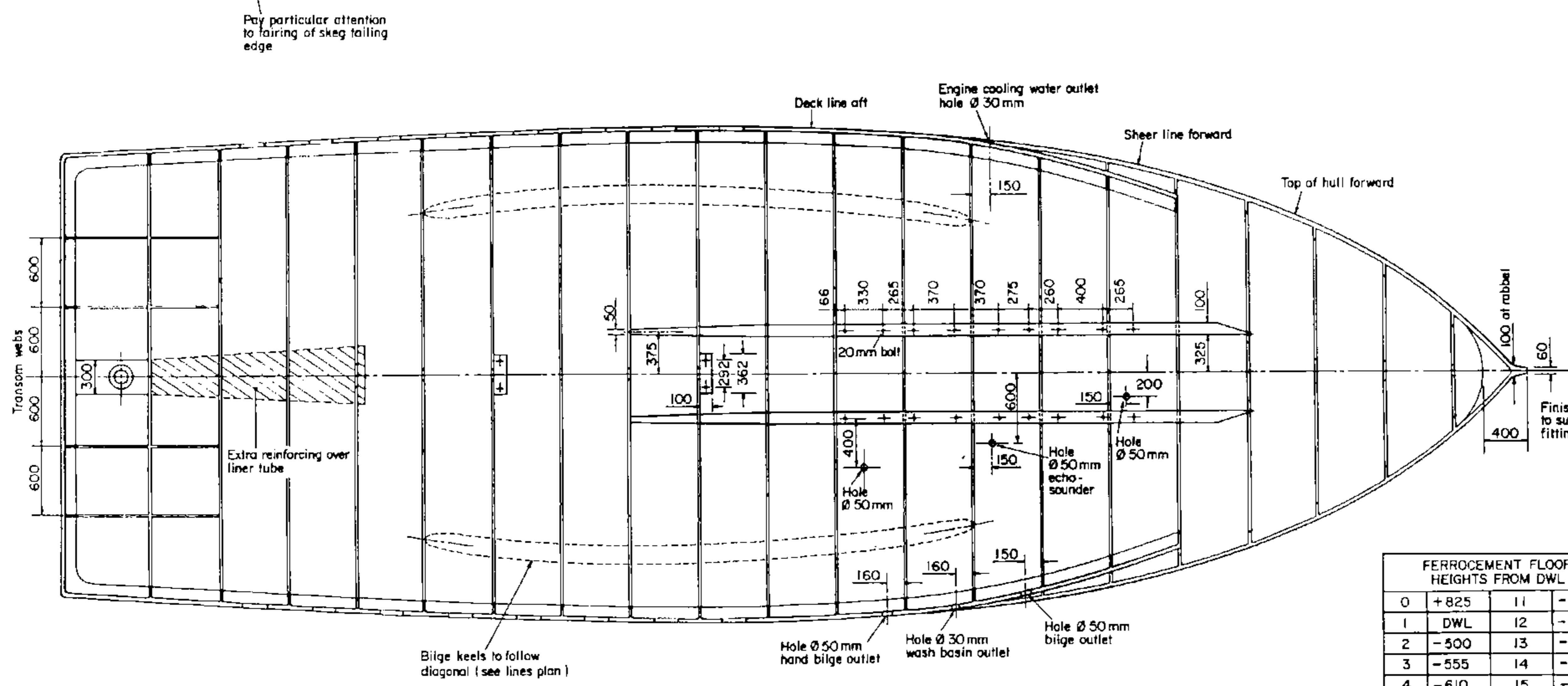
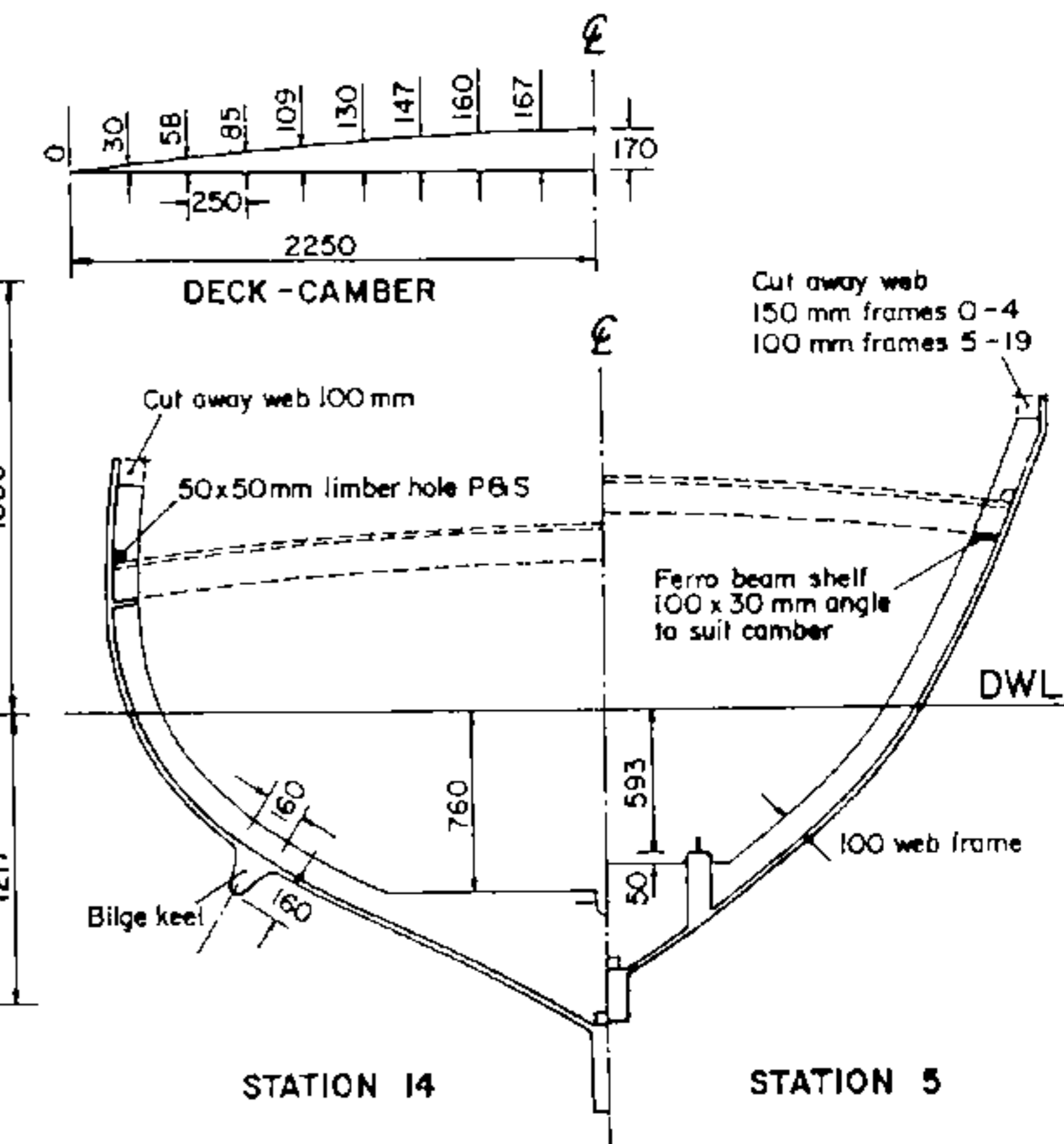
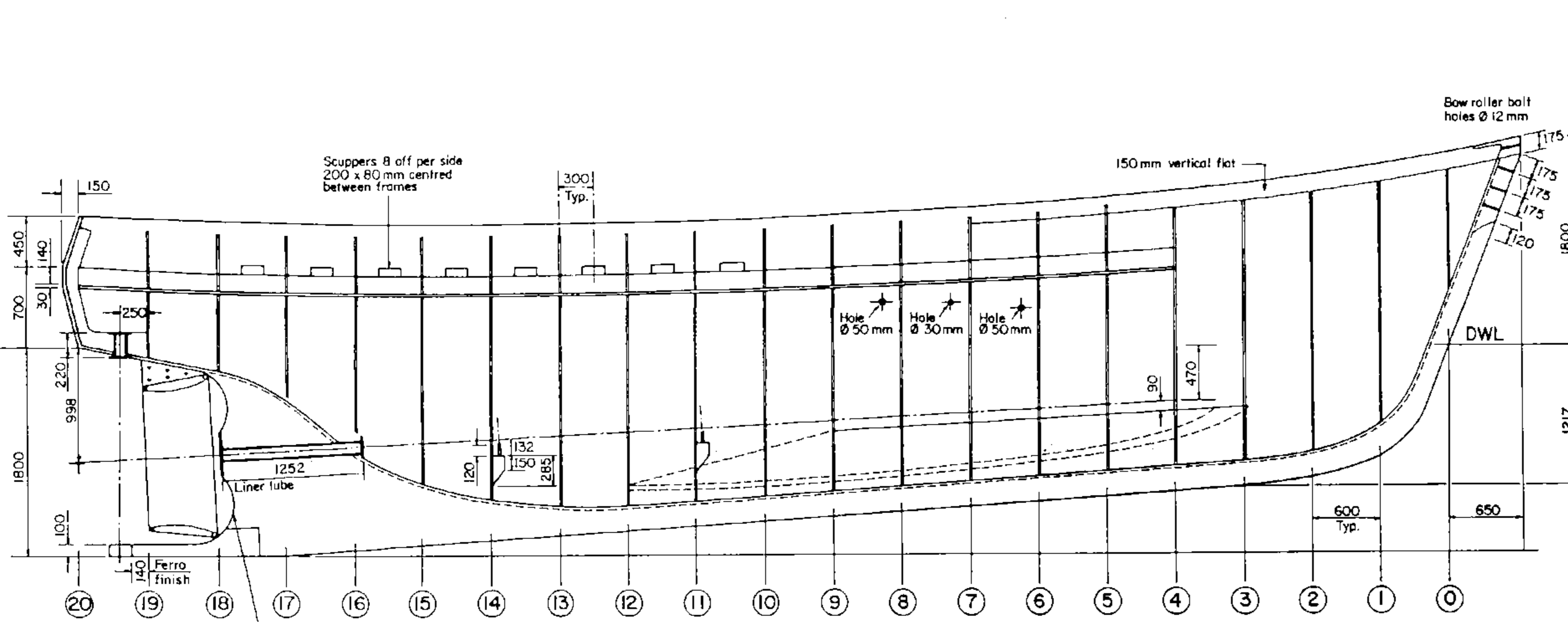


CHARACTERISTICS AT DWL

Length overall	(L _{OA})	12.80 m	(42 ft 0 in)
Length of waterline	(L _{WL})	12.00 m	(39 ft 4 in)
Breadth max.	(B)	4.28 m	(14 ft 0 in)
Draught	(T)	1.80 m	(5 ft 11 in)
Depth	(D)	1.99 m	(6 ft 6 in)
Displacement volume	(∇)	24.72 m ³	(873 ft ³)
Displacement weight	(Δ)	25.34 tonnes	(24.98 tons)
Prismatic coefficient	(C _p)	0.588	



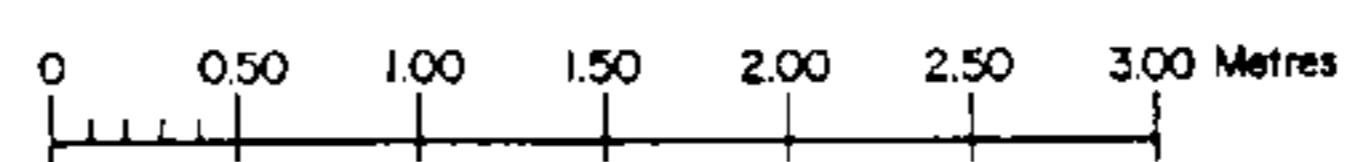
	12.80 m Ferrocement Trawler		
	LINES PLAN		
	Scale : as shown	Boat No.	Drwg. No.
	Design: J T	IND-101	PI
Rome, October 1989			



TYPICAL END VIEW OF AN
ENGINE BED ARRANGEMENT

- Notes: 1) Engine bed bolt locations to suit
Ashok Layland ALM 680
- 2) 50 x 50 mm limber holes to be fitted as required
- 3) Set rubber and beam shelf bolt holes to miss beam and
frame locations
- 4) Steering wire runs to be checked prior to casting and holes
to be provided in webs if required

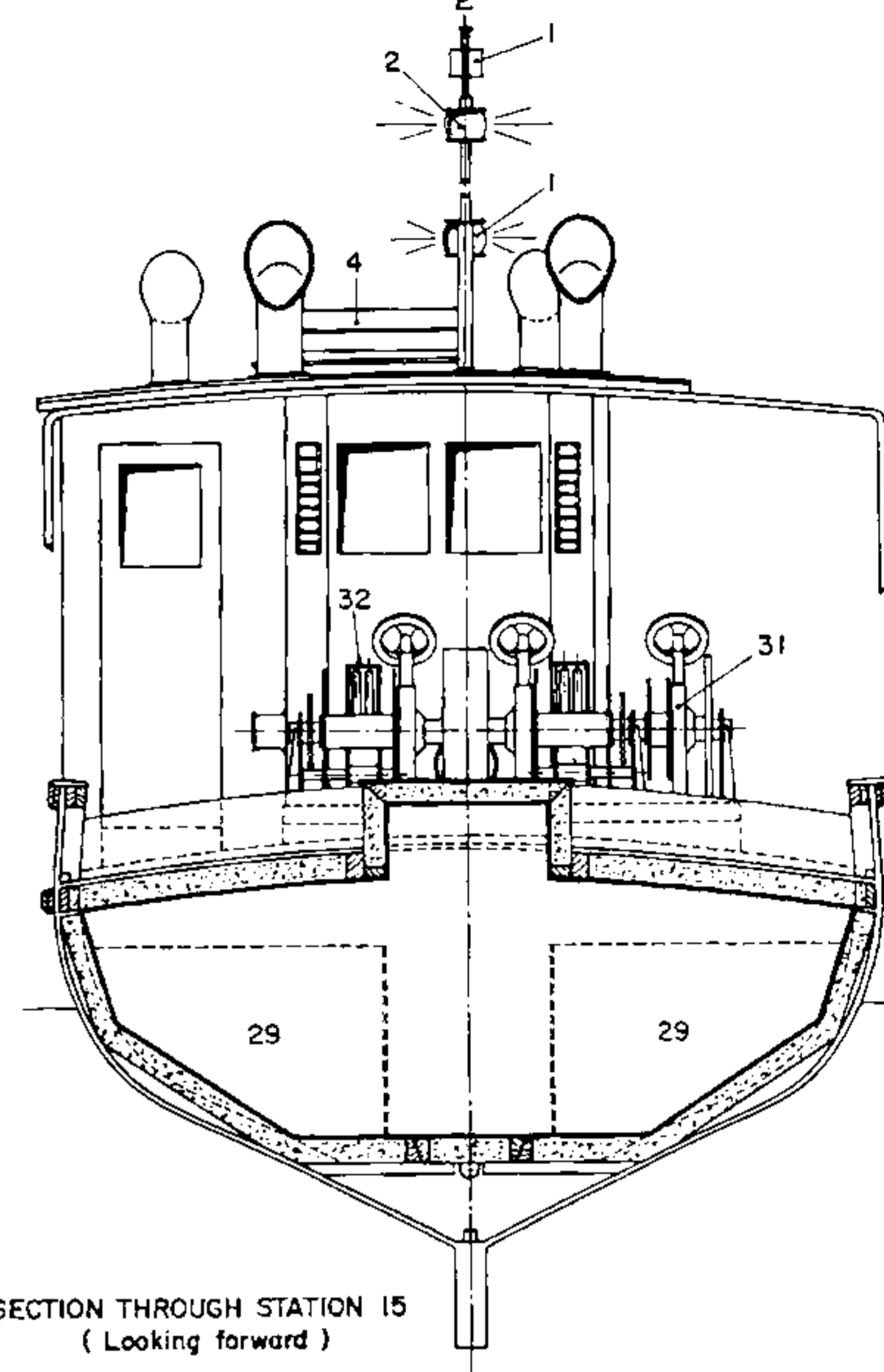
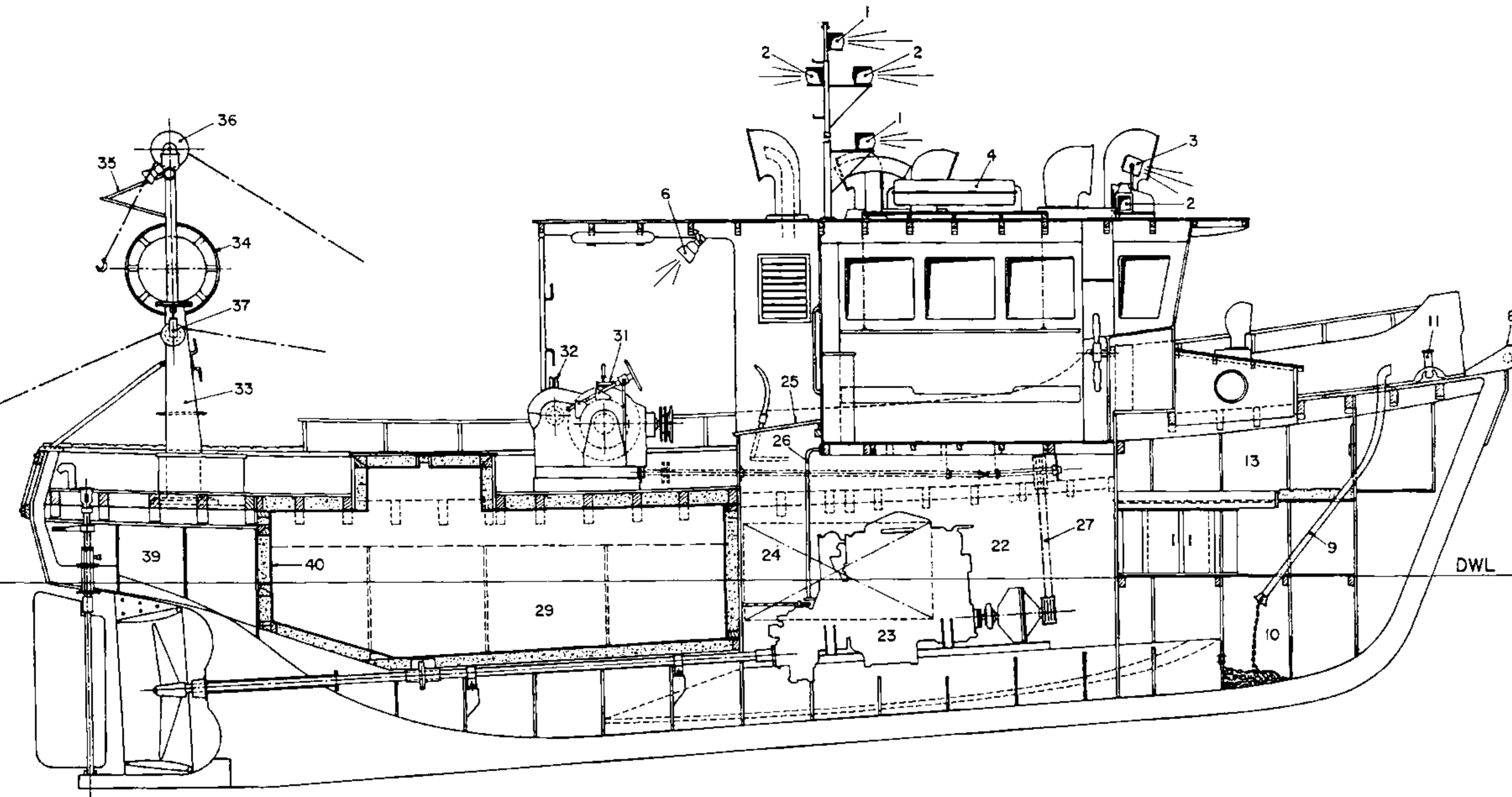
FERROCEMENT FLOOR HEIGHTS FROM DWL			
0	+825	11	-661
1	DWL	12	-694
2	-500	13	-727
3	-555	14	-758
4	-610	15	-792
5	-643	16	
6	-676	17	
7-9	-850	18	
10	-628	19	-140
		0	



12.80 m Ferrocement Trawler

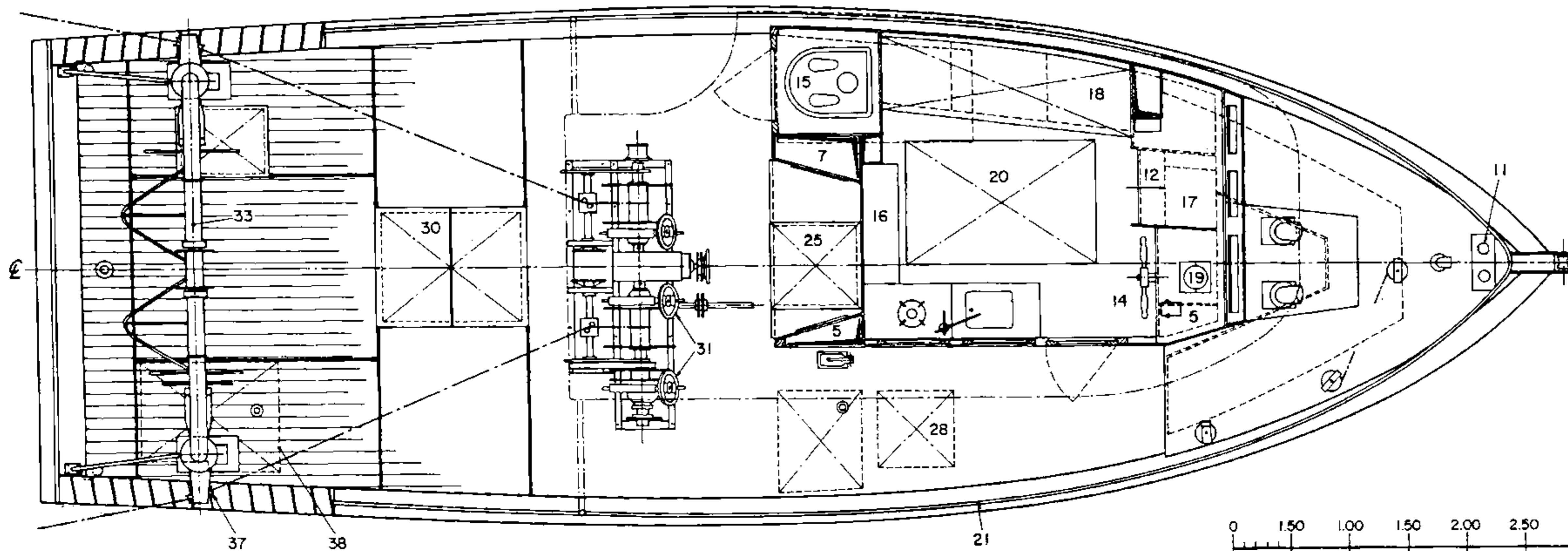
HULL CONSTRUCTION

Scale: as shown	Boat No.	Drwg. No.
Design: J T	IND-101	P2
Rome, October 1989		



SECTION THROUGH STATION 15
(Looking forward)

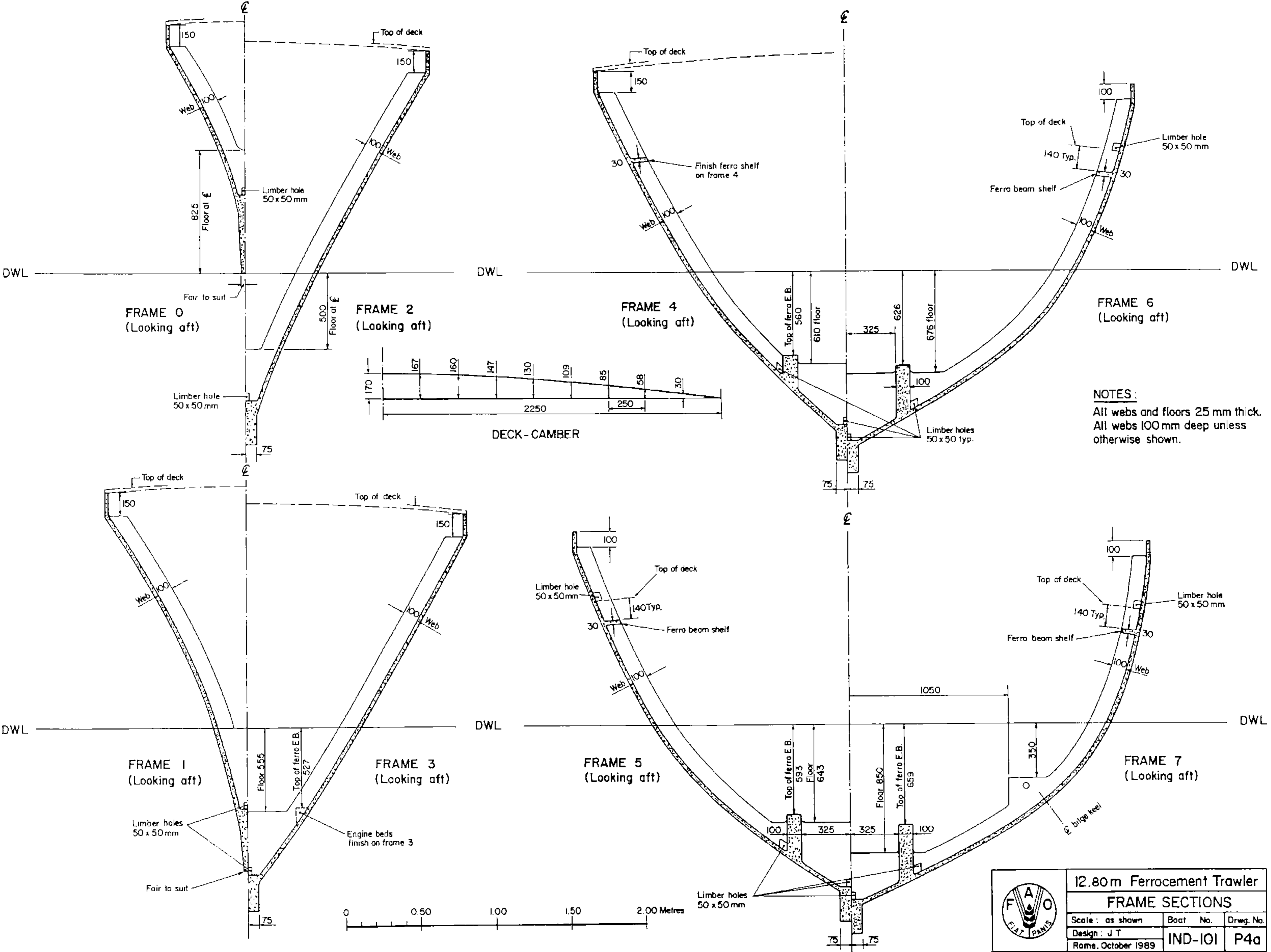
20 19 18 17 16 15 14 13 12 11 10 9 8 7 6 5 4 3 2 1 0




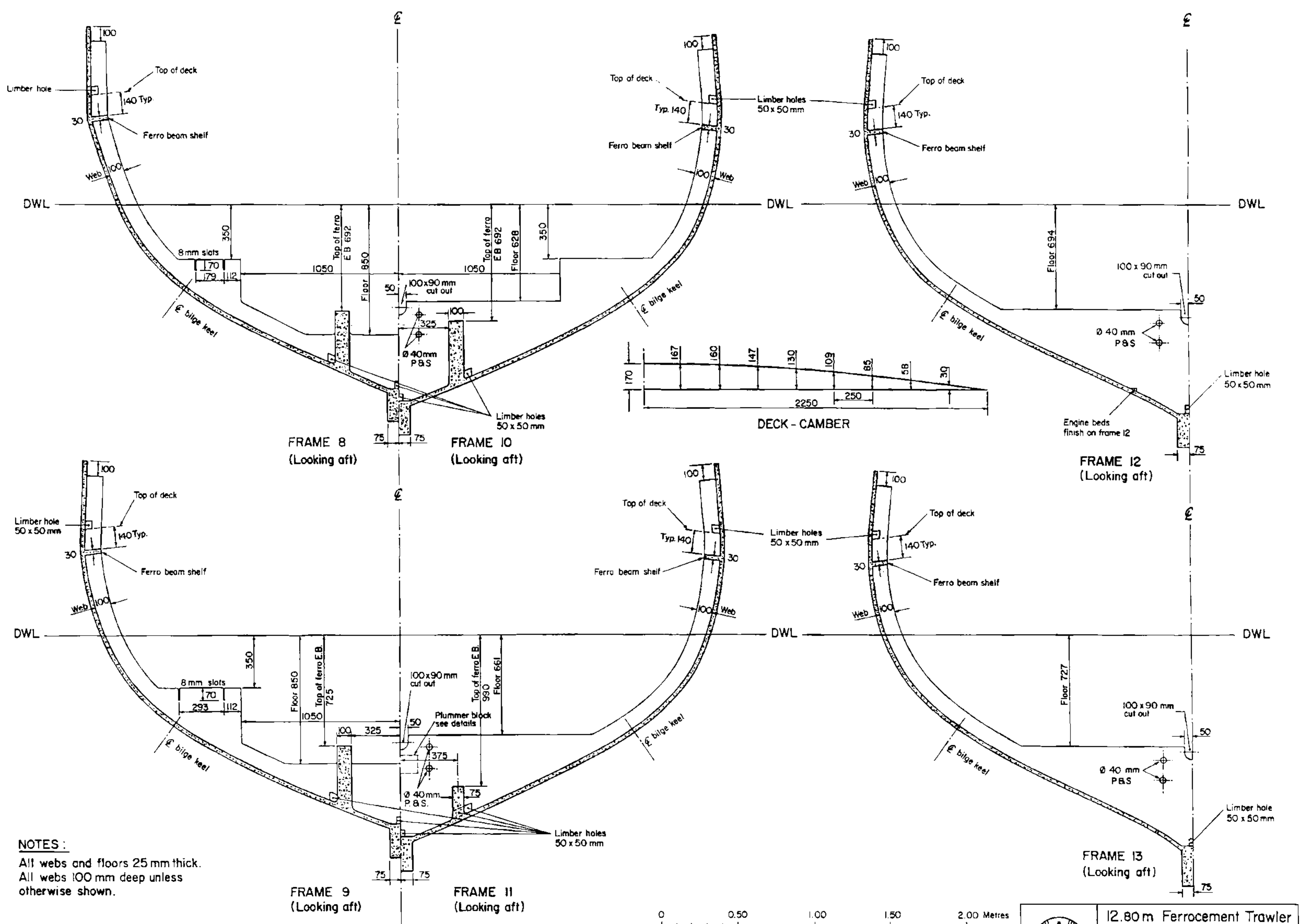
- | | |
|--------------------------------|--|
| 1. Fishing lights | 23. Main engine Ashok Leyland ALM 680, 128 BHP at 1500 RPM |
| 2. Navigation lights | 24. Fuel tanks |
| 3. Search light | 25. Hatch to engine room |
| 4. Liferaft | 26. Ladder to engine room |
| 5. Supply vents to engine room | 27. Belt drive and layshaft to trawl winch |
| 6. Deck floodlights | 28. Battery box |
| 7. Engine exhaust | 29. Insulated fish hold |
| 8. Chain roller | 30. Hatch to fish hold |
| 9. Chain hawse pipe | 31. Trawl winch (3 drum) |
| 10. Chain locker | 32. Linked spooling gear |
| 11. Bollard | 33. Gantry |
| 12. Access to fo'c'sle | 34. Overhead net drum |
| 13. Fo'c'sle (4 berths) | 35. Cod end guide |
| 14. Wheelhouse | 36. Top roller |
| 15. W.C. | 37. Trawl block |
| 16. Galley | 38. Water tanks |
| 17. Chart table | 39. Tiller flat and store |
| 18. Bunk (and pipe cot over) | 40. Access to tiller flat |
| 19. Compass | |
| 20. Engine removal hatch | |
| 21. Hand rail | |
| 22. Engine room | |

	12.80m Ferrocement Trawler		
	GENERAL ARRANGEMENT		
	Scale : as shown	Boat No.	Drwg. No.
	Design: J F	IND-101	P3
			Rome, October 1989

0 1.50 1.00 1.50 2.00 2.50 3.00 Metres

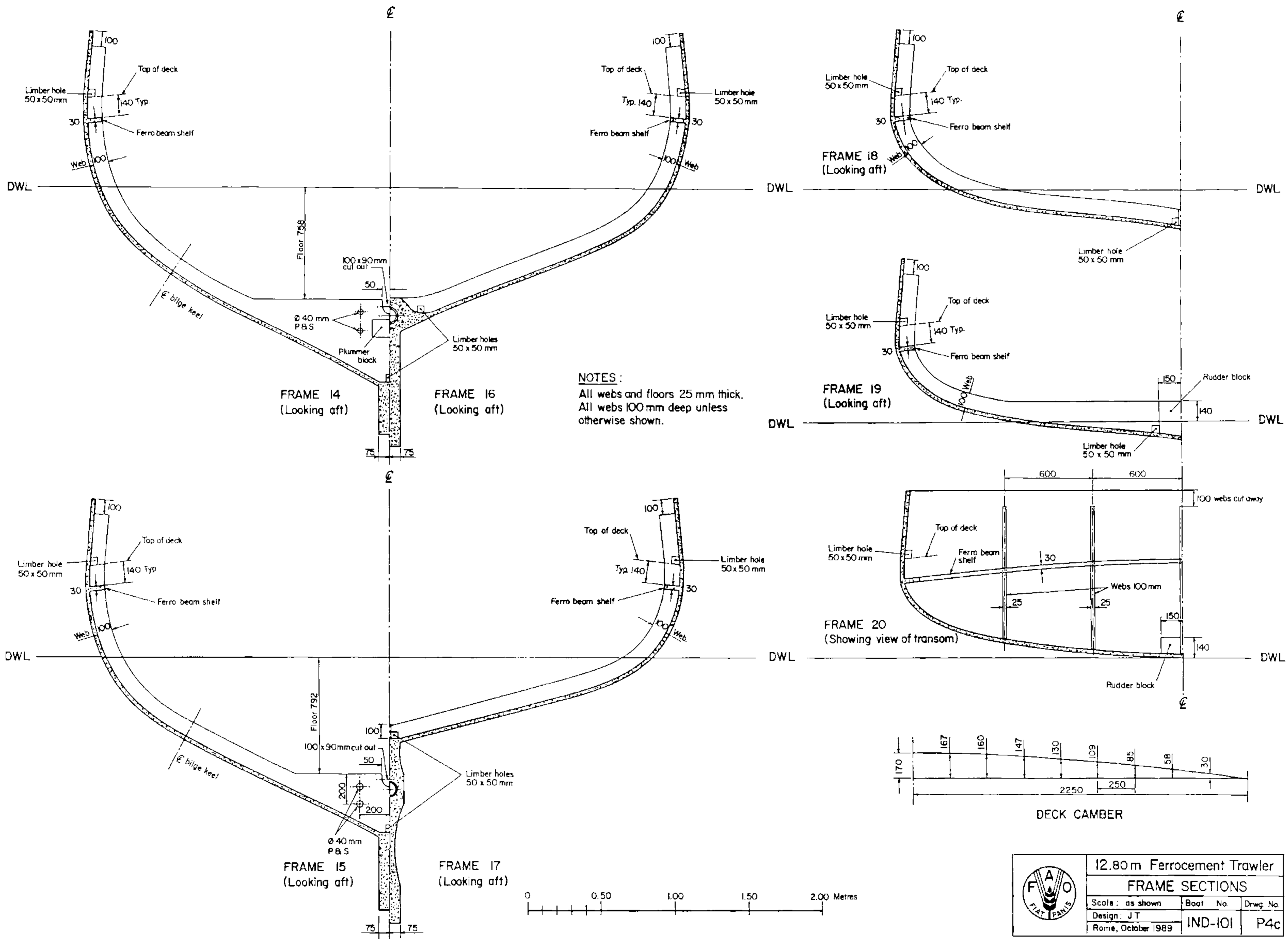


	12.80 m Ferrocement Trawler		
	FRAME SECTIONS		
	Scale : as shown	Boat No.	Drwg. No.
	Design : J T	IND-101	P4a
Rame. October 1989			

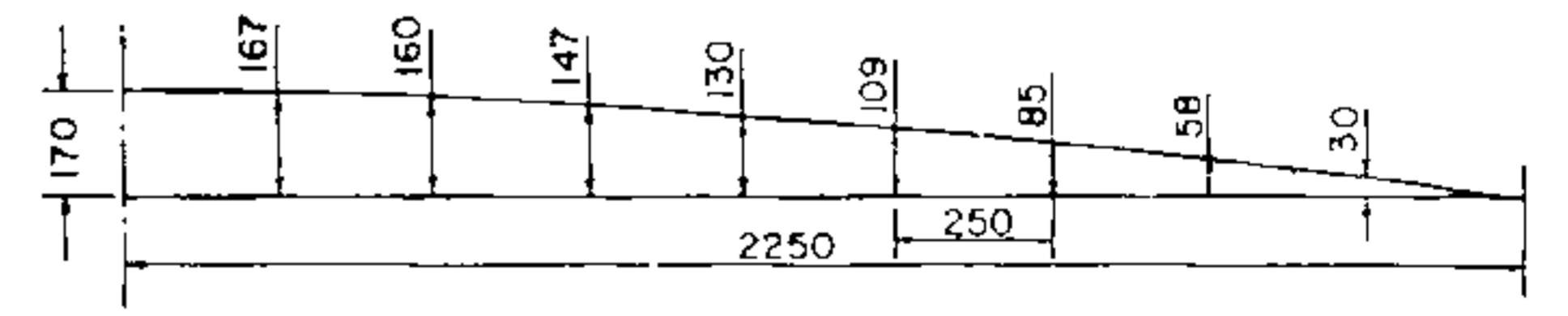


NOTES :
 All webs and floors 25 mm thick.
 All webs 100 mm deep unless otherwise shown.

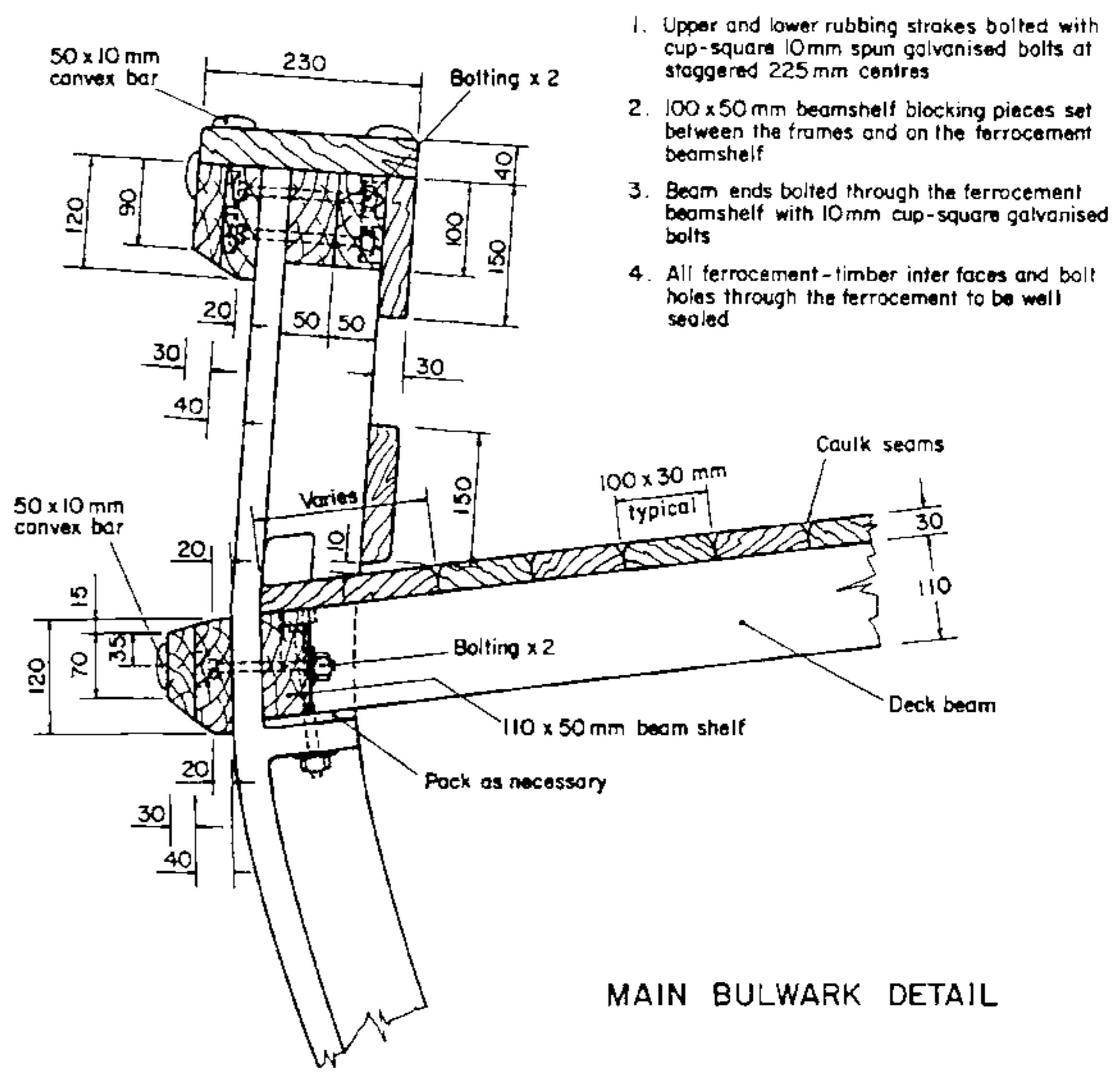
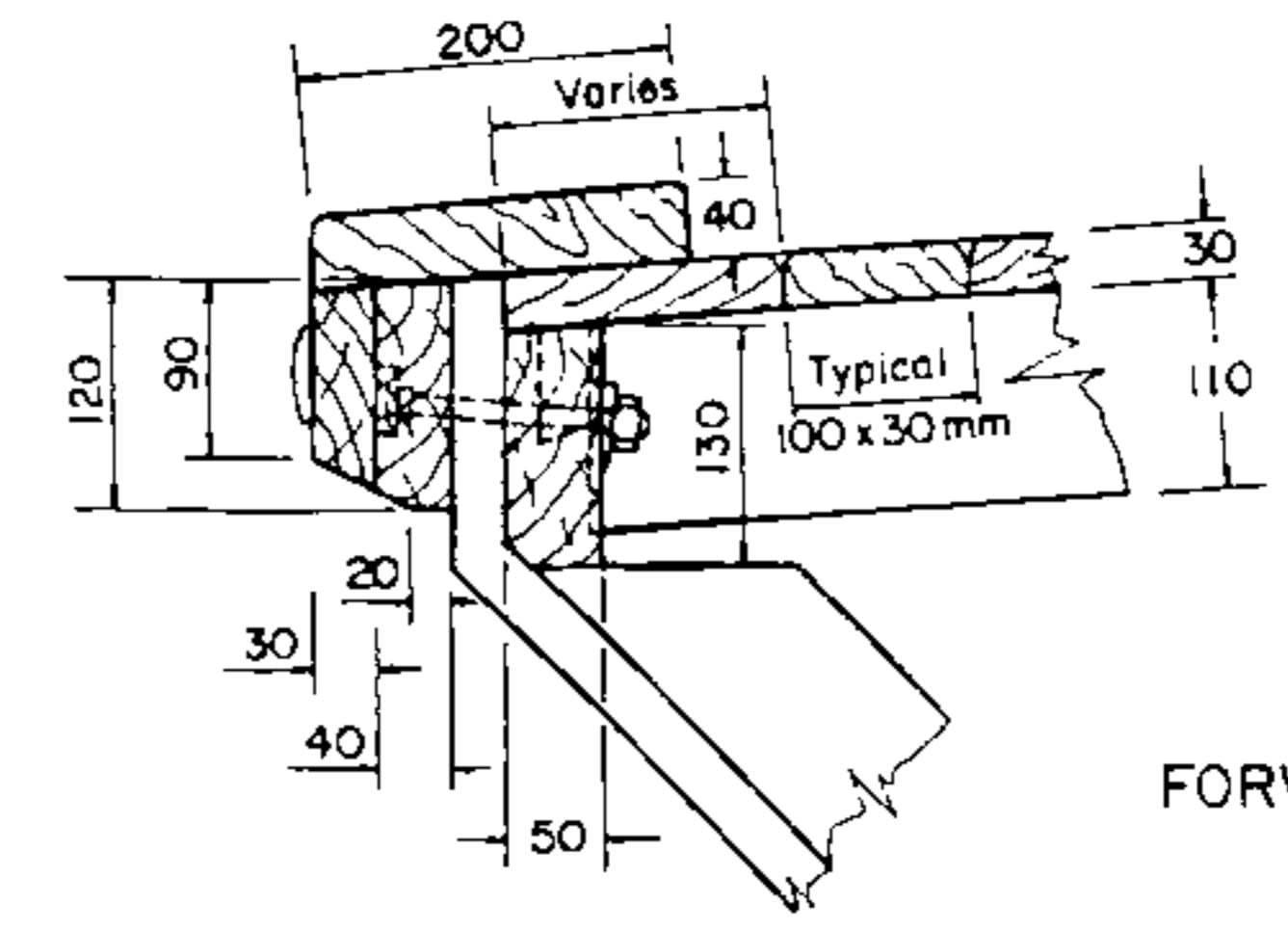
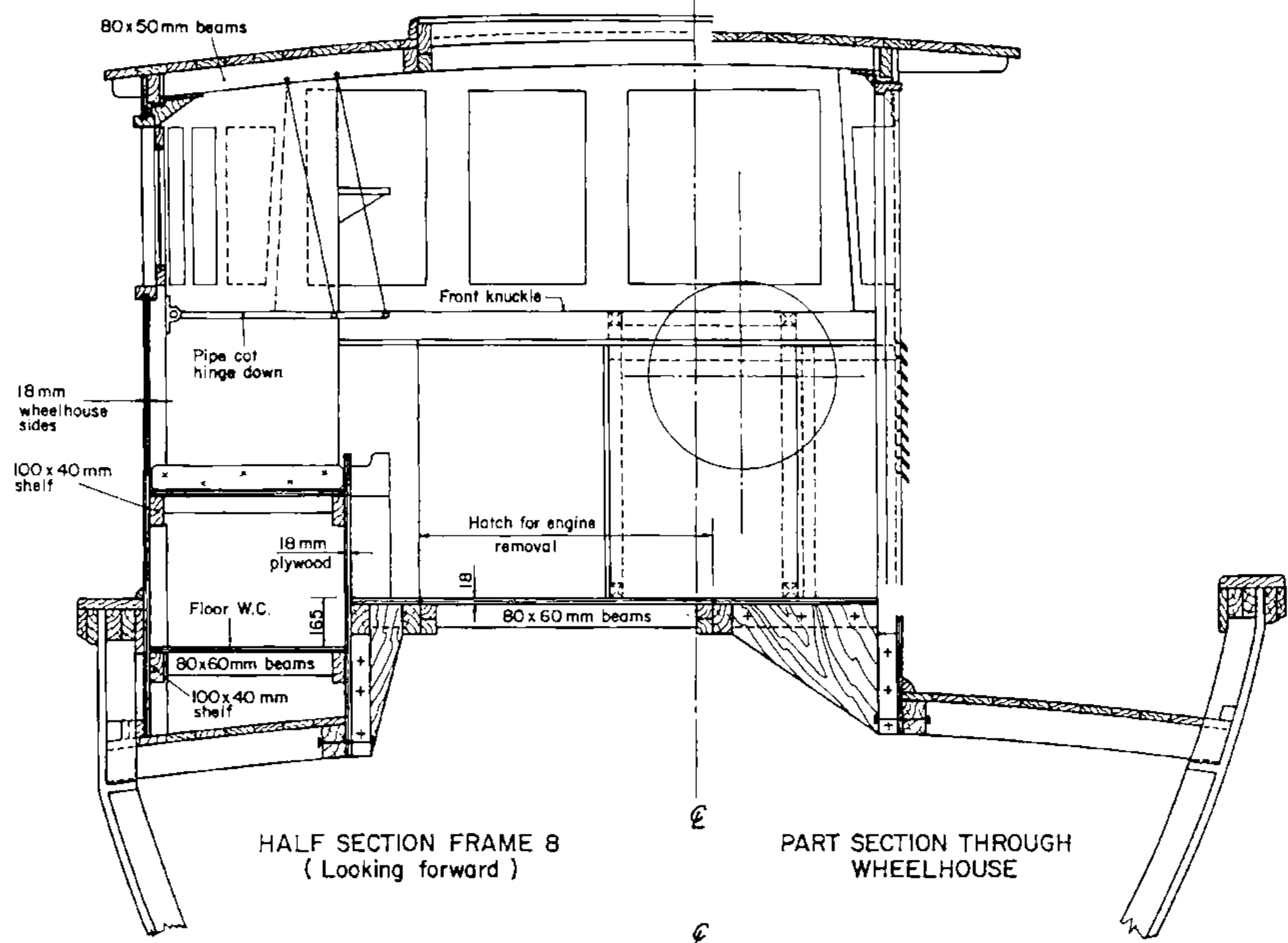
	12.80 m Ferrocement Trawler		
	FRAME SECTIONS		
	Scale : as shown	Boat No.	Drwg. No.
	Design : J T	IND-101	P4b
Rome, October 1989			



NOTES:
 All webs and floors 25 mm thick.
 All webs 100 mm deep unless otherwise shown.



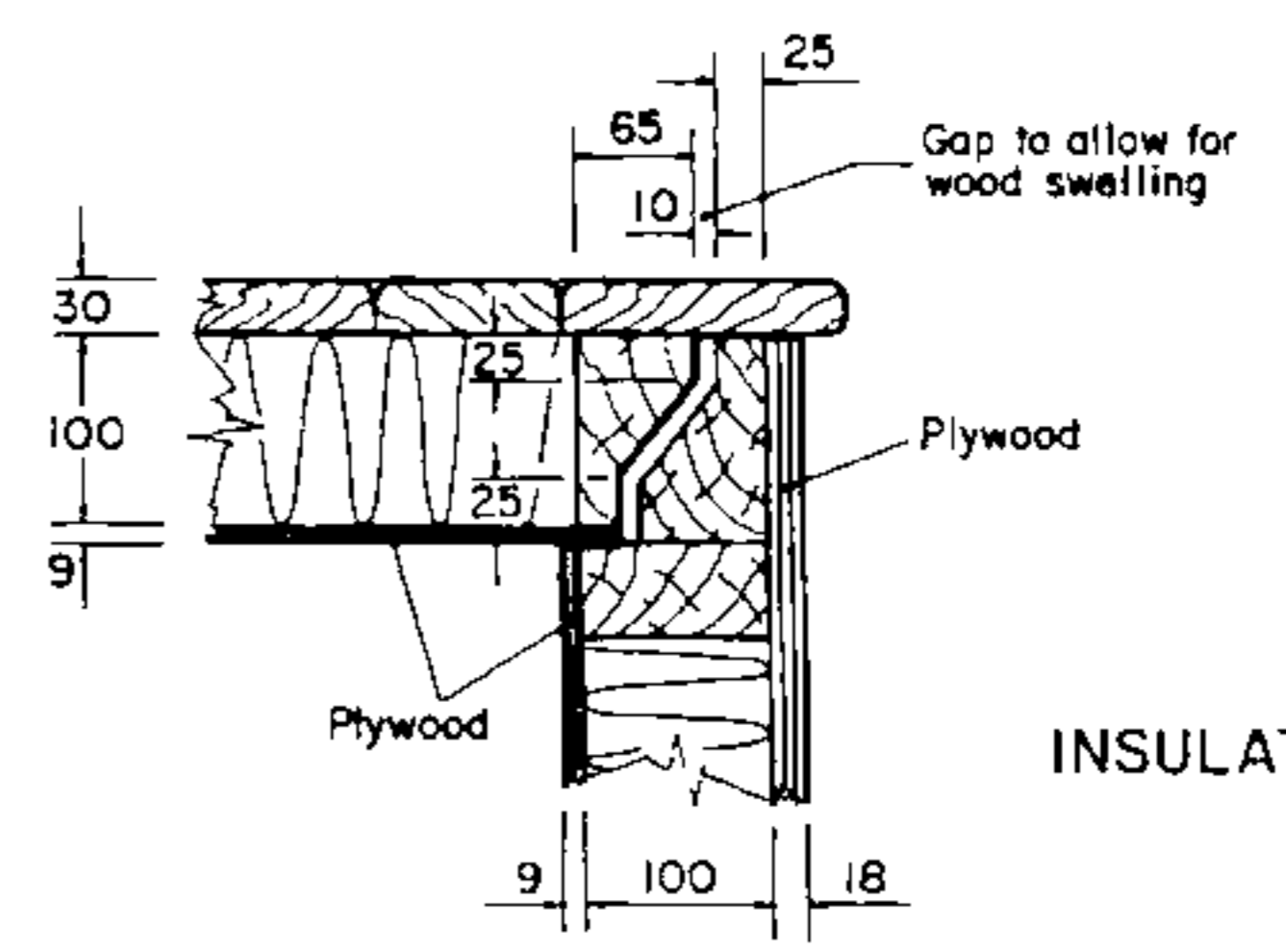
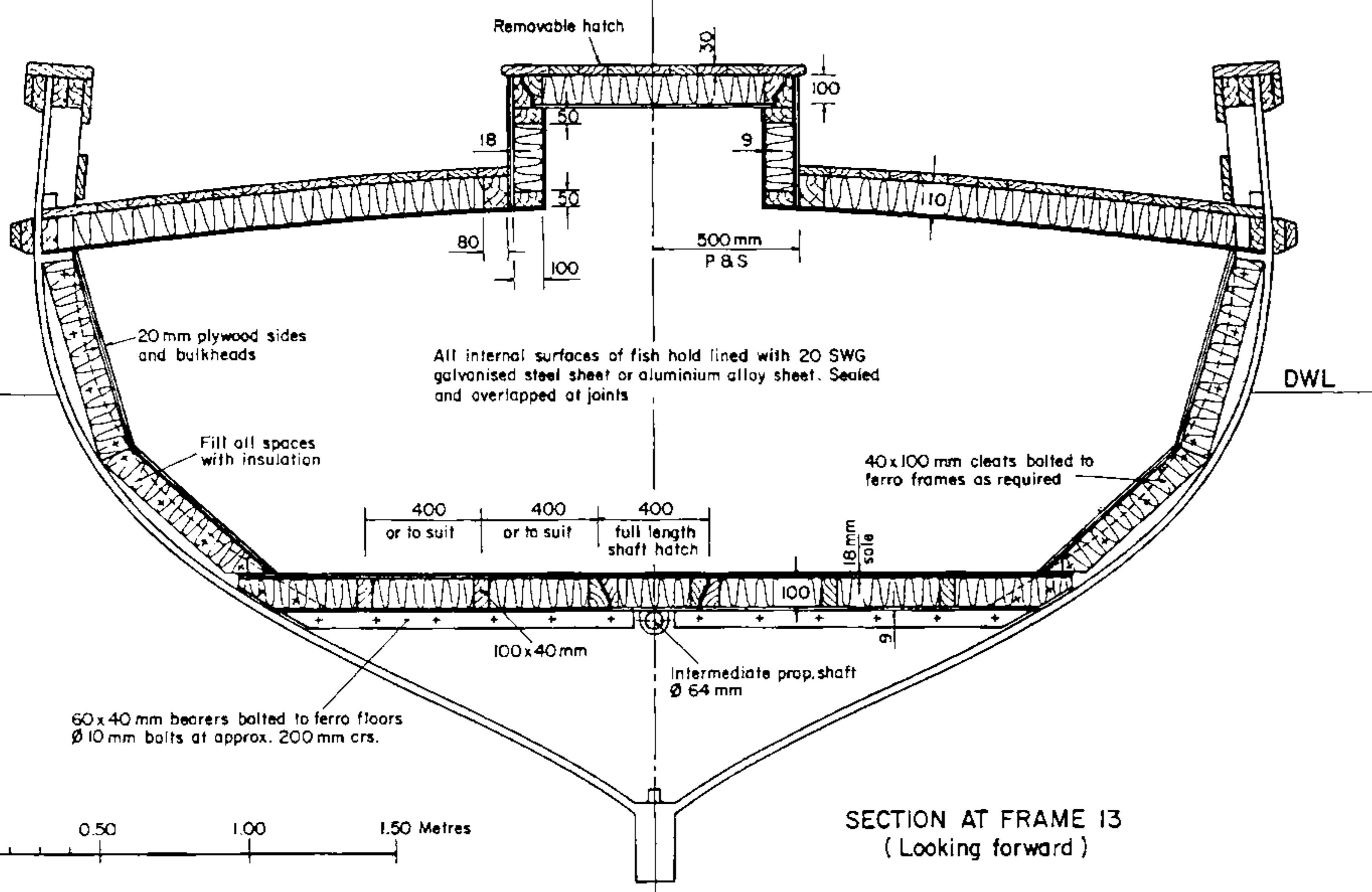
	12.80 m Ferrocement Trawler		
	FRAME SECTIONS		
	Scale: as shown	Boat No.	Drwg. No.
	Design: JT	IND-101	P4c
	Rome, October 1989		



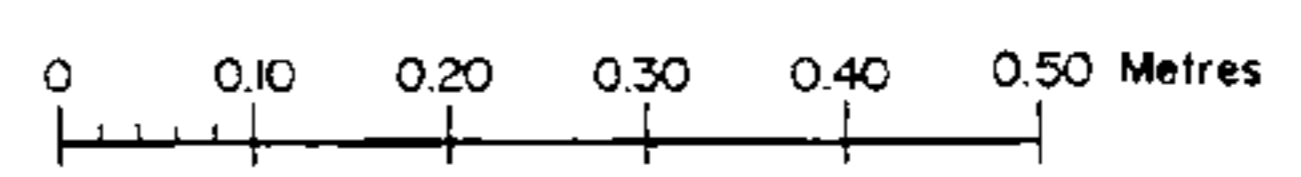
FORWARD DECK DETAIL AT SIDE

1. Upper and lower rubbing strakes bolted with cup-square 10mm spun galvanised bolts at staggered 225 mm centres
2. 100x50mm beamshelf blocking pieces set between the frames and on the ferrocement beamshelf
3. Beam ends bolted through the ferrocement beamshelf with 10mm cup-square galvanised bolts
4. All ferrocement-timber inter faces and bolt holes through the ferrocement to be well sealed

MAIN BULWARK DETAIL



INSULATED HATCH COAMING DETAIL



	12.80m Ferrocement Trawler		
	SUPERSTRUCTURE AND SECTIONS		
	Scale : as shown	Boat No.	Drwg. No.
	Design : J T	IND-101	P5
	Roma, October 1989		

