



amati

Cannoniere Svedese

art. 1150



MATERIALI ED ACCESSORI CONSIGLIATI PER LA COSTRUZIONE

2400/04 Faggio mm.4x4
2410/02 Noce mm.2x2
2410/03 Noce mm.3x3
2440/03 Faggio mm.1x3
2440/06 Faggio mm.2x3
2440/08 Faggio mm.3x5
2440/25 Faggio mm.2x25
2460/05 Noce mm.1x3

2460/08 Noce mm.2x4
2460/09 Noce mm.2x6
2520/02 Tondi faggio mm.2
2520/04 Tondi faggio mm.4
2520/05 Tondi faggio mm.5
2520/06 Tondi faggio mm.6
2535/02 Tondi noce mm.2

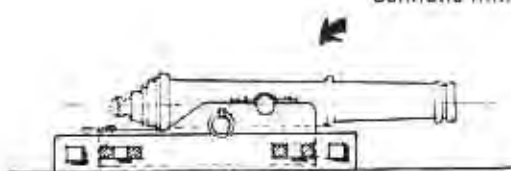
Traverse affusto-Gru di capone
Supporto affusto
Incintone
Fasciame scafo
Bordi paiolati
Later.supporto affusto
Affusto-Baule-Mensole
Ricopertura ponti-Timone
Ricopertura casottino-baule
Bordature varie
Corrimano-Supp.gru di capone
Panche rematori
Basamento
Basamento e pennoni
Albero
Albero
Supp.tenda rematori e barra

2820/05 Filo ottone
4000/03 Canestrini
4010/20 Ancore anti
4035/06 Colonnine r
4050/03 Bigotte noc
4070/02 Bozzelli noc
4087/03 Bozzelli bos
4087/05 Bozzelli bos
4116/01 Argani vert
4124/02 Refe mm.0
4124/05 Refe mm.0
4130 Cerniere an
4134/07 Chiodini ot
4164/45 Cannone m
4308 Scalmi
4306 Remi in leg
4328 Paiolato
4370/05 Cerniere tir
4380/04 Palline legn
4704 Occhiello
5510

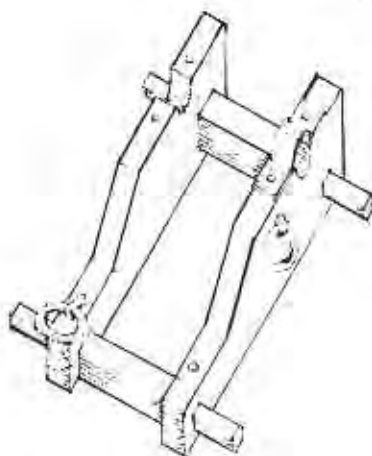
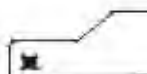
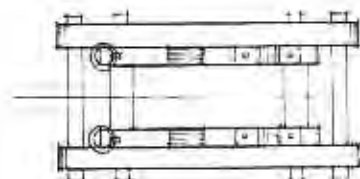
era 1770

1 Tavola

Cannone mm.45 art.4164



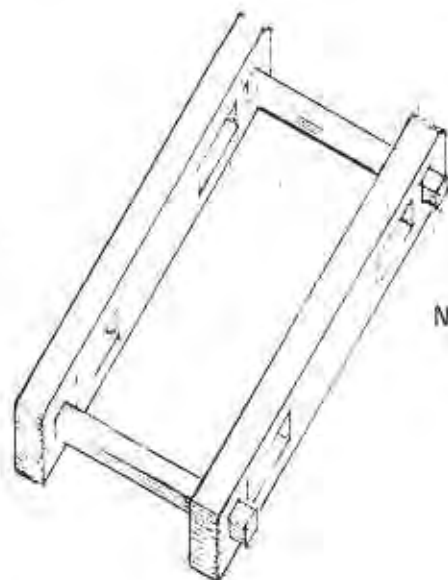
Ricavare da listelli



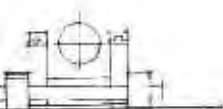
Ganci per bozzelli

one mm.0,5
elli mm.3
antiche mm.20
ne noce mm.6
noce mm.3
noce mm.2
bosso 1f. mm.3
bosso 1f. mm.5
verticali tipo E
m.0,25
m.0,50
e antiche
di ottone mm.7
e mm.45

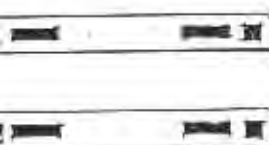
Noce mm.2x4



n legno mm.70
e timone tipo A
legno mm.4
li senza vite
r vele



Listello 2x25



Listello faggio mm.3x5

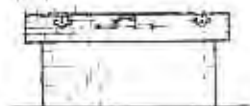


Listello faggio mm.2x2

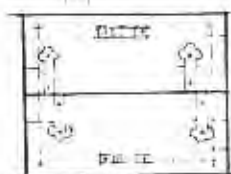


Listello noce mm.4x4

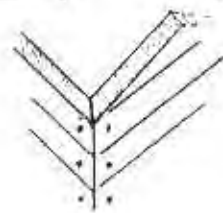
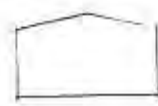
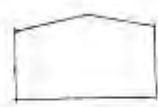
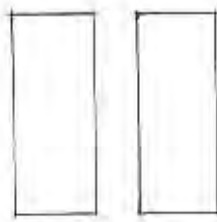
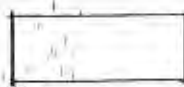
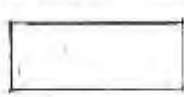
Carniere antiche art 4130



Noce mm.4x4

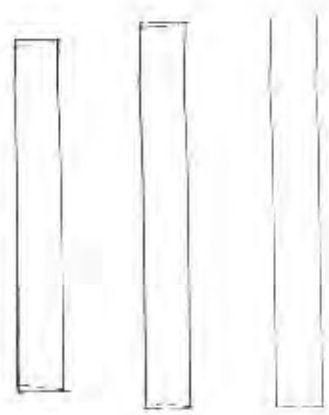


Ricavare da listello 2x25 e ricoprire con noce 1x3






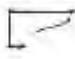




PRUA

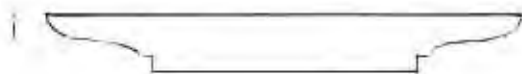
Da ricavare di noce III



da n. 2

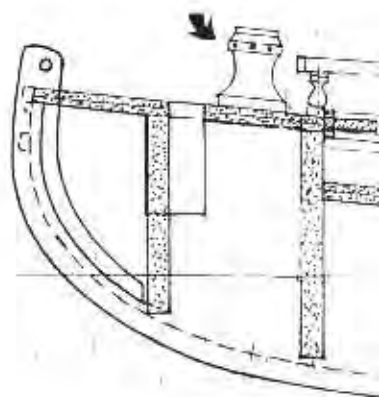
- a 
- b 
- c 
- d 
- e 
- f 
- g 
- h 

Le mensoline a-h sono da ripetere due volte.



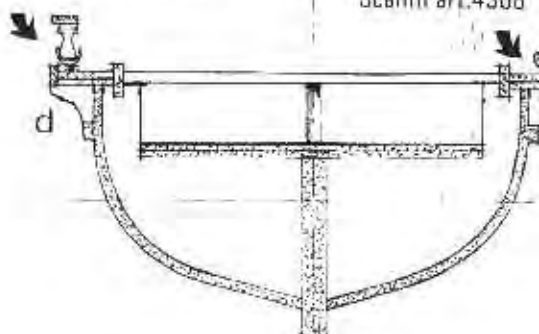
Mensoline da ricavare da listello mm.2x25

Argano art.4116/01

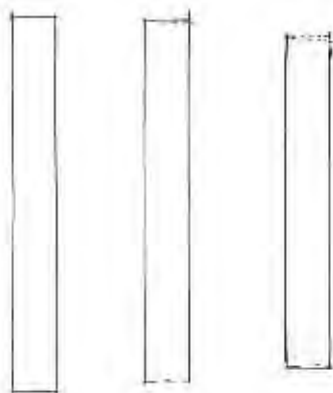


Colonnine noce mm.6 art.4035/06

Scalmi art.4308

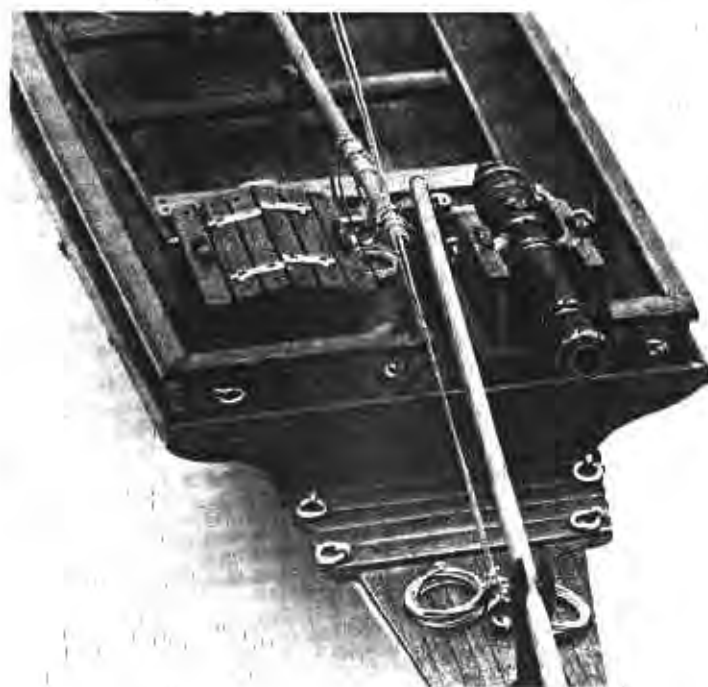


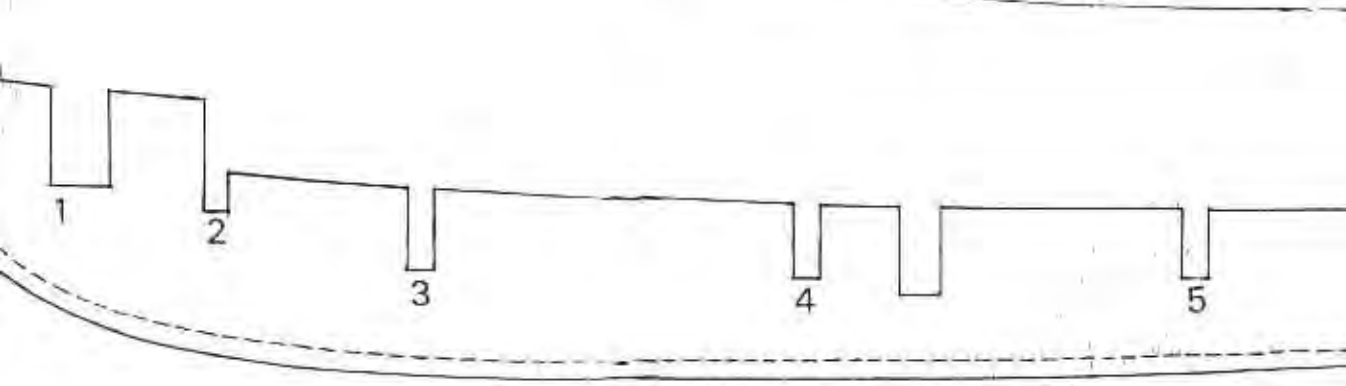
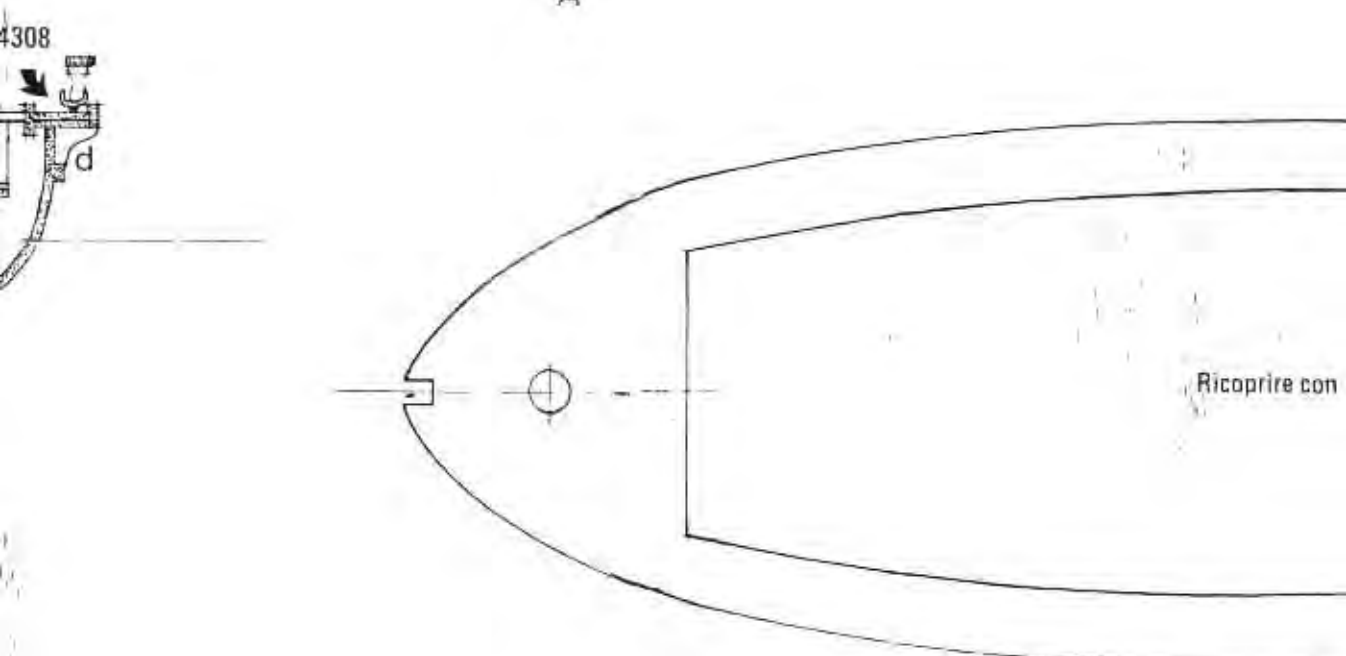
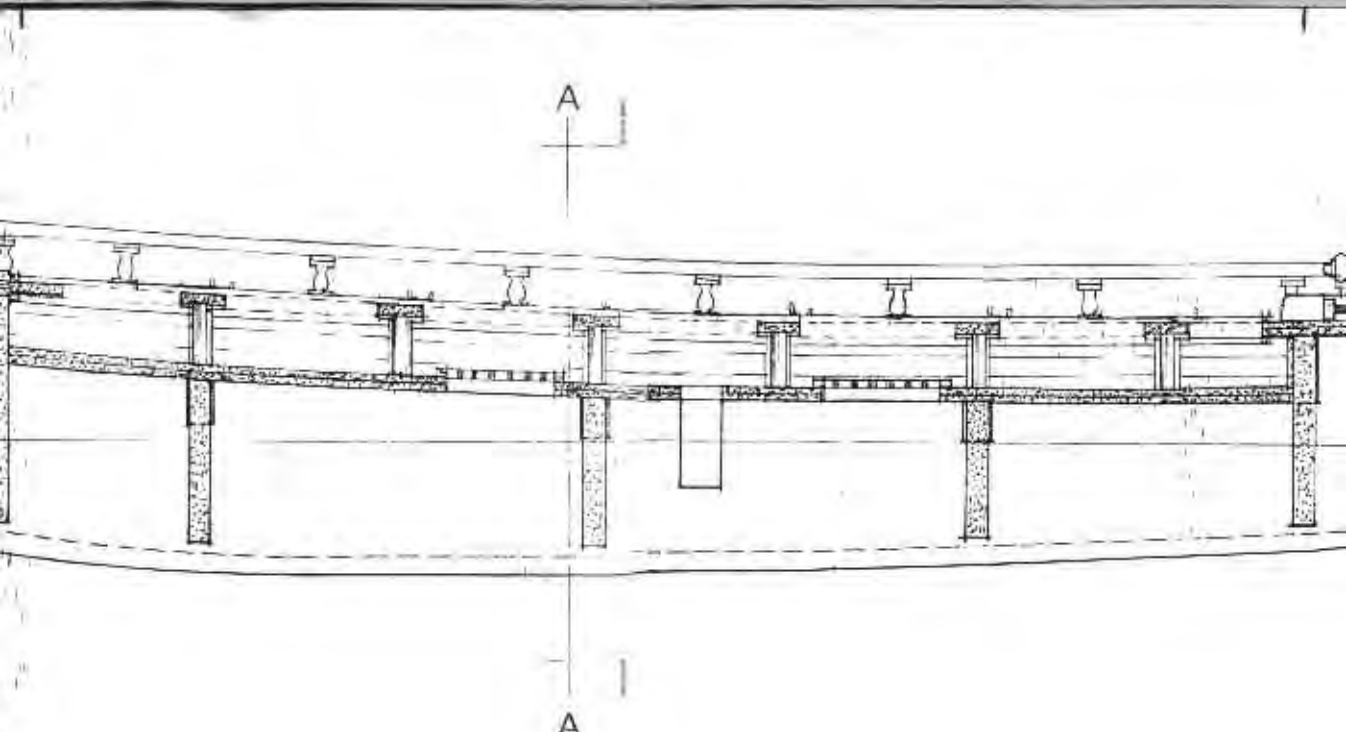
SEZIONE A/A

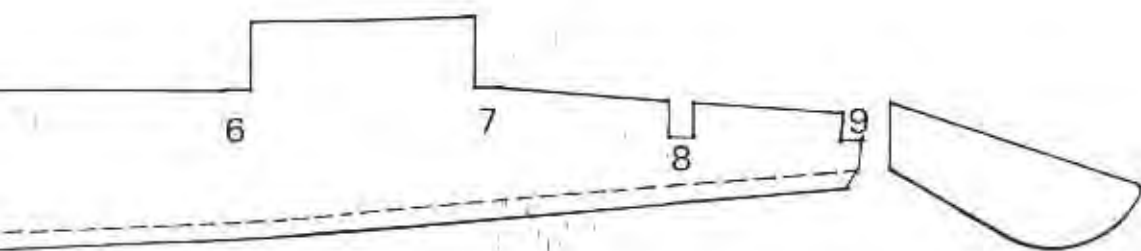
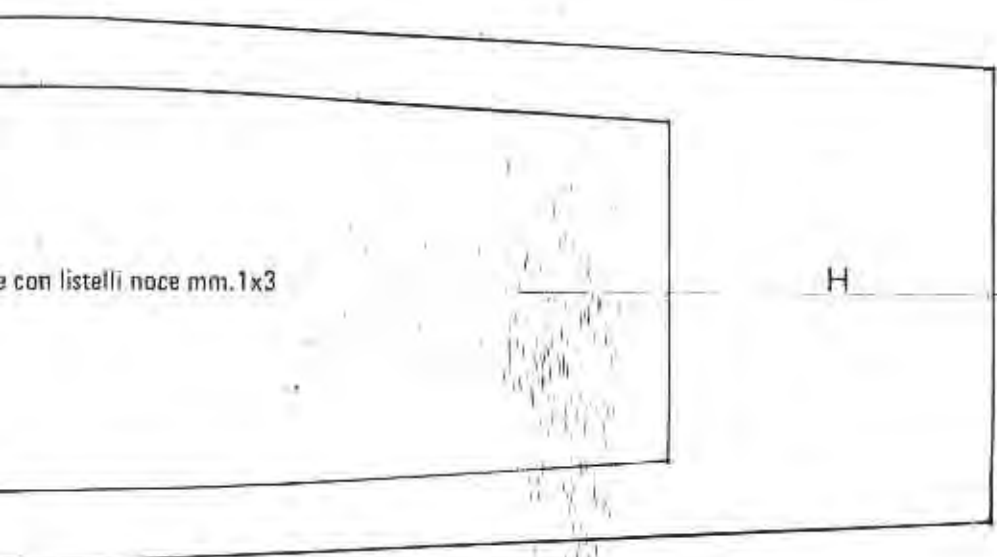
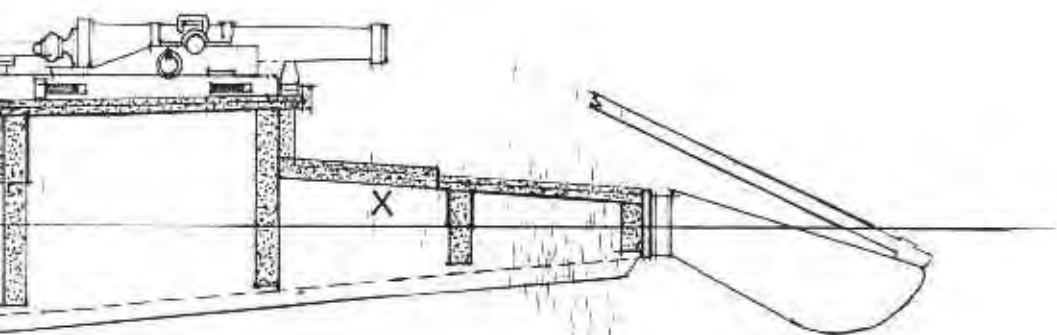


da listello
2x6

POPPA







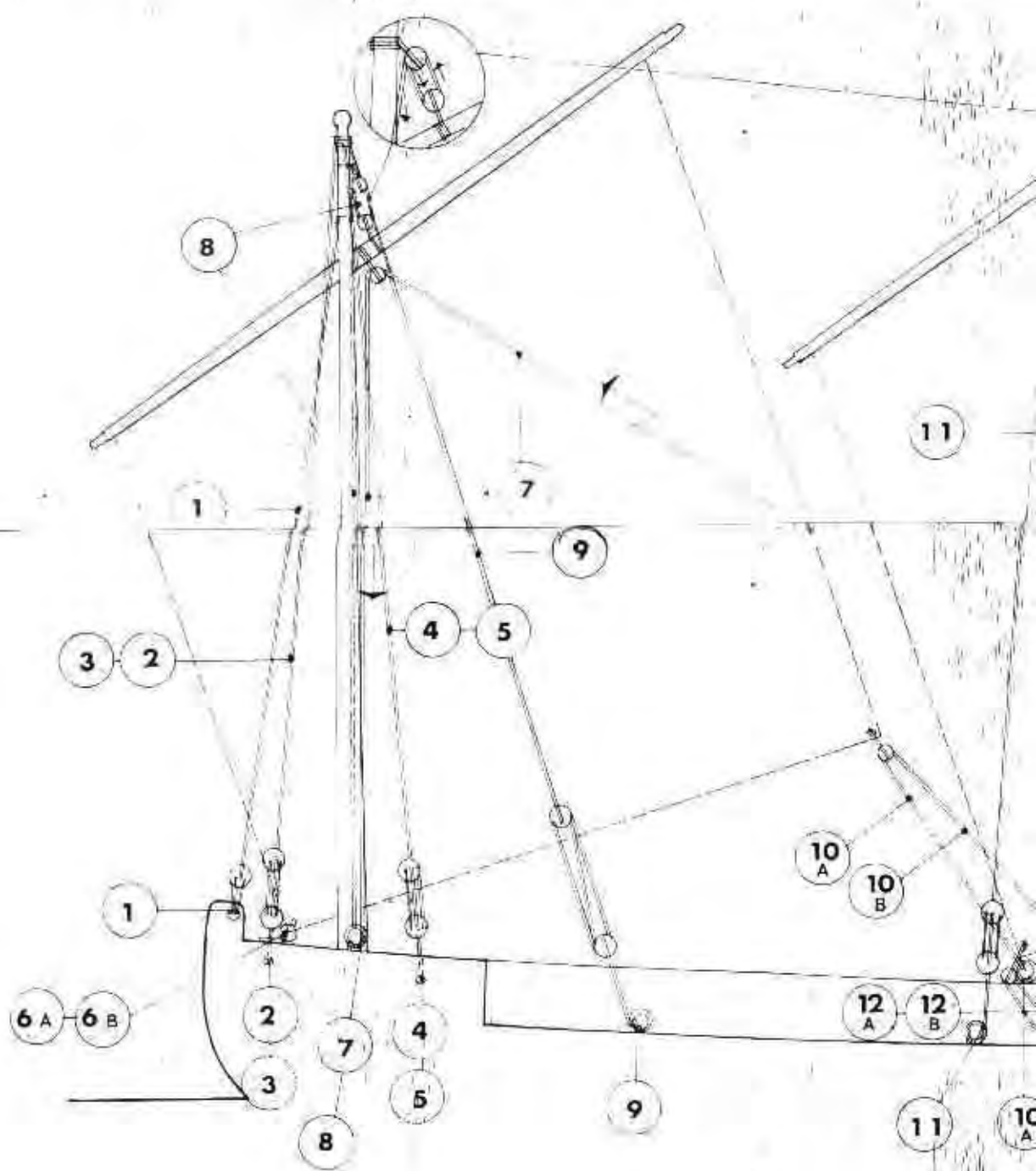
CHIGLIA ORDINATE E PEZZO X spessore mm.3

PEZZO H spessore mm.1

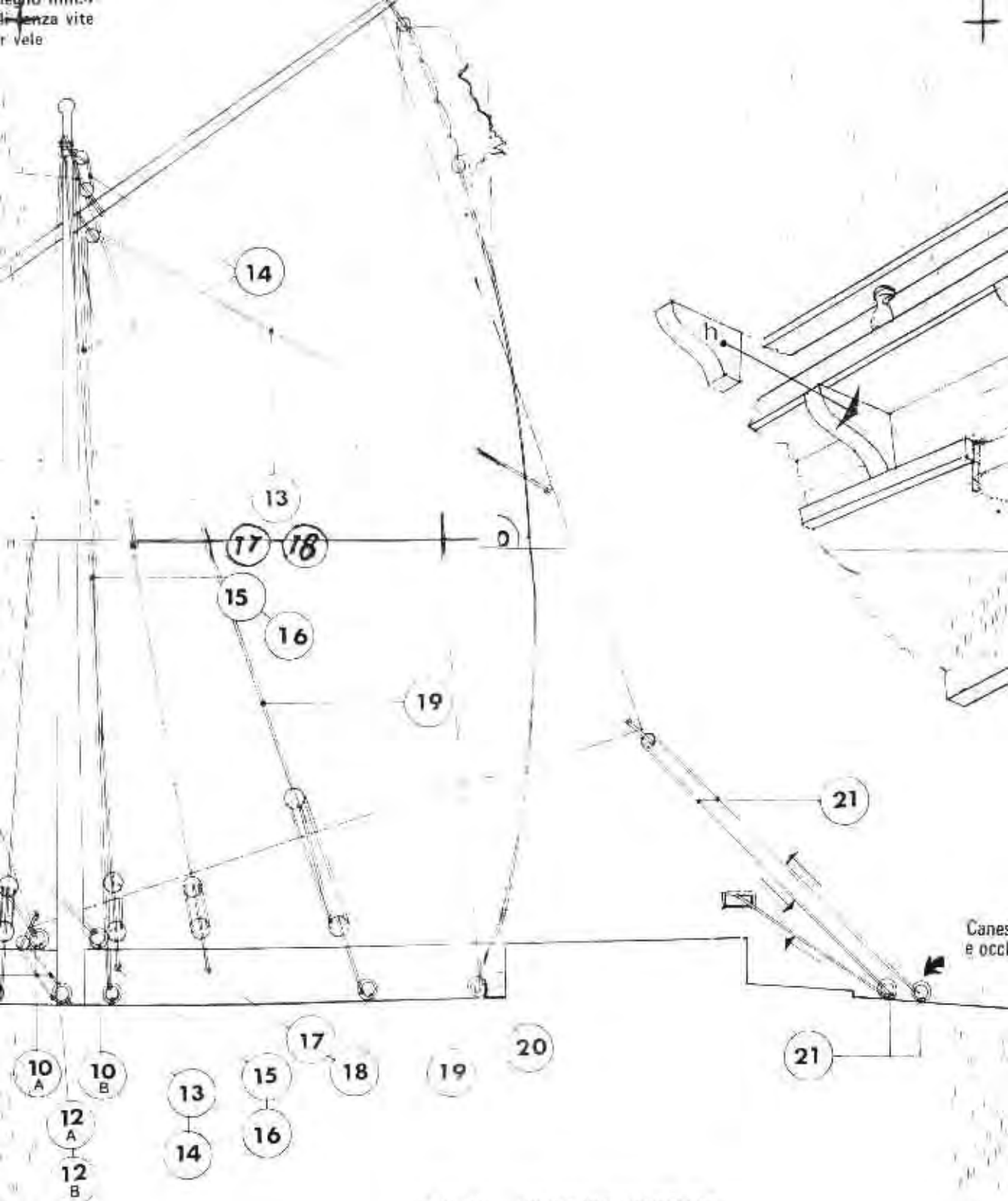
2520/06 Tondi faggio mm.6
2535/02 Tondi noce mm.2

Albero
Supp.tenda rematori e barra

4370/05 Cerniere timone
4380/04 Palline legno
4704 Occhiali timone
5619 Tela per vele

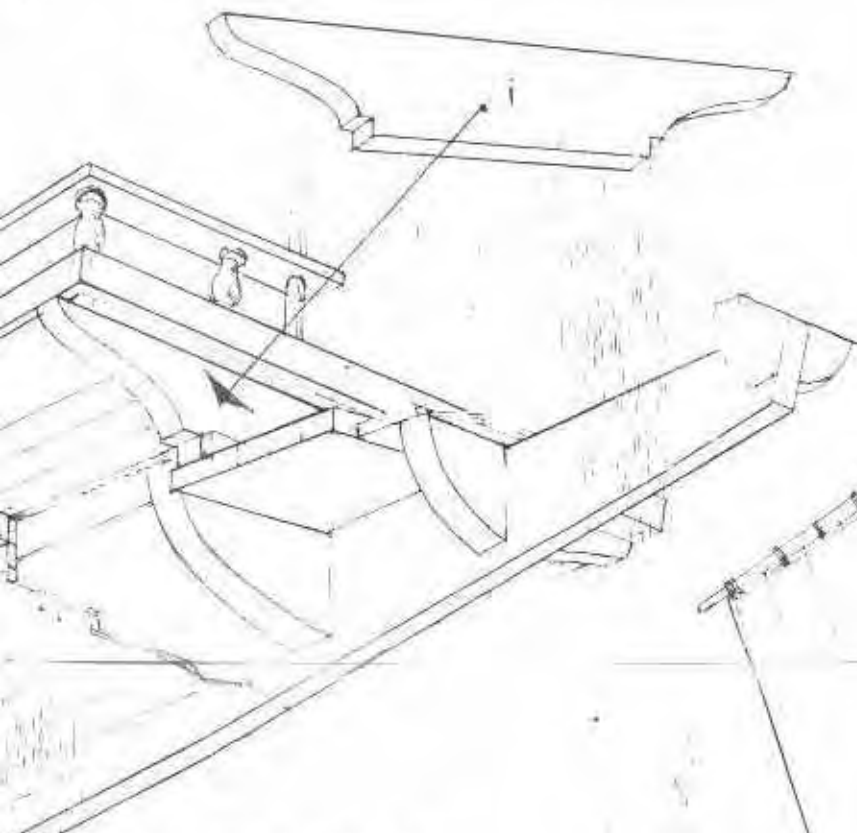


...enza vite
...r vele



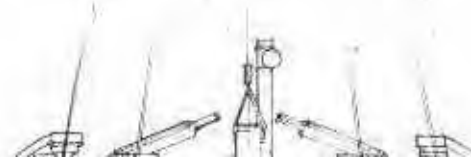
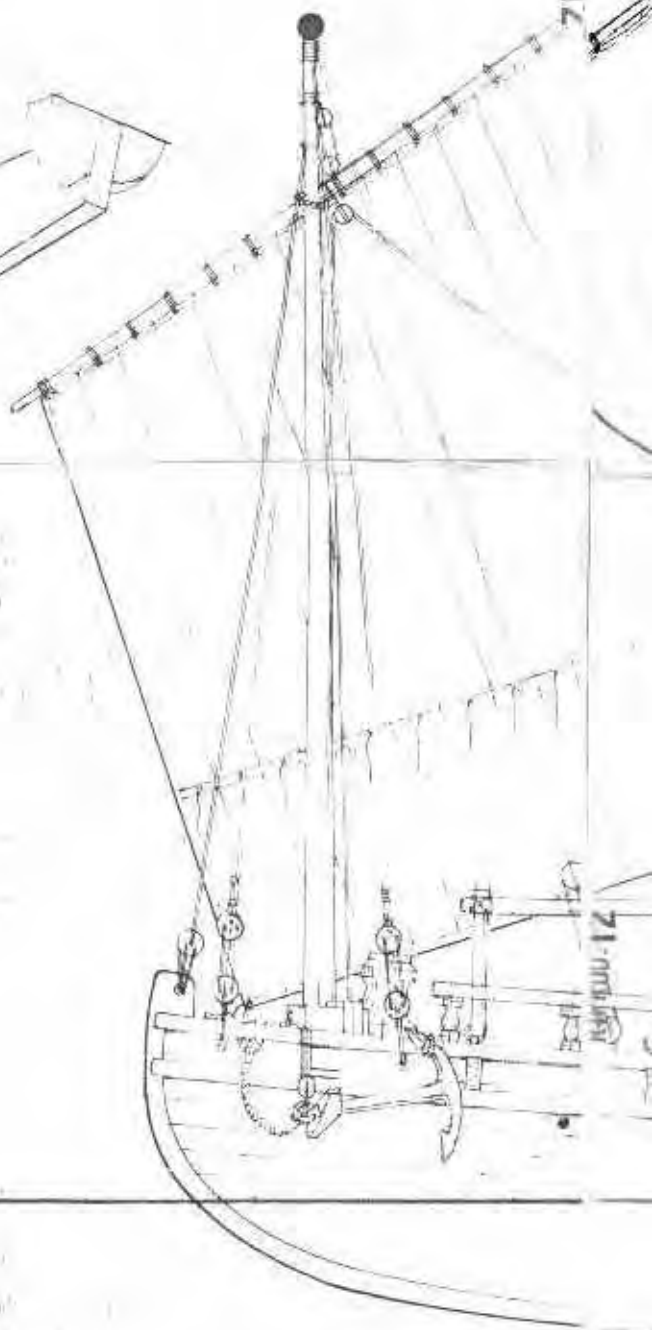
SCHEM FISSAGGIO MANOVRE

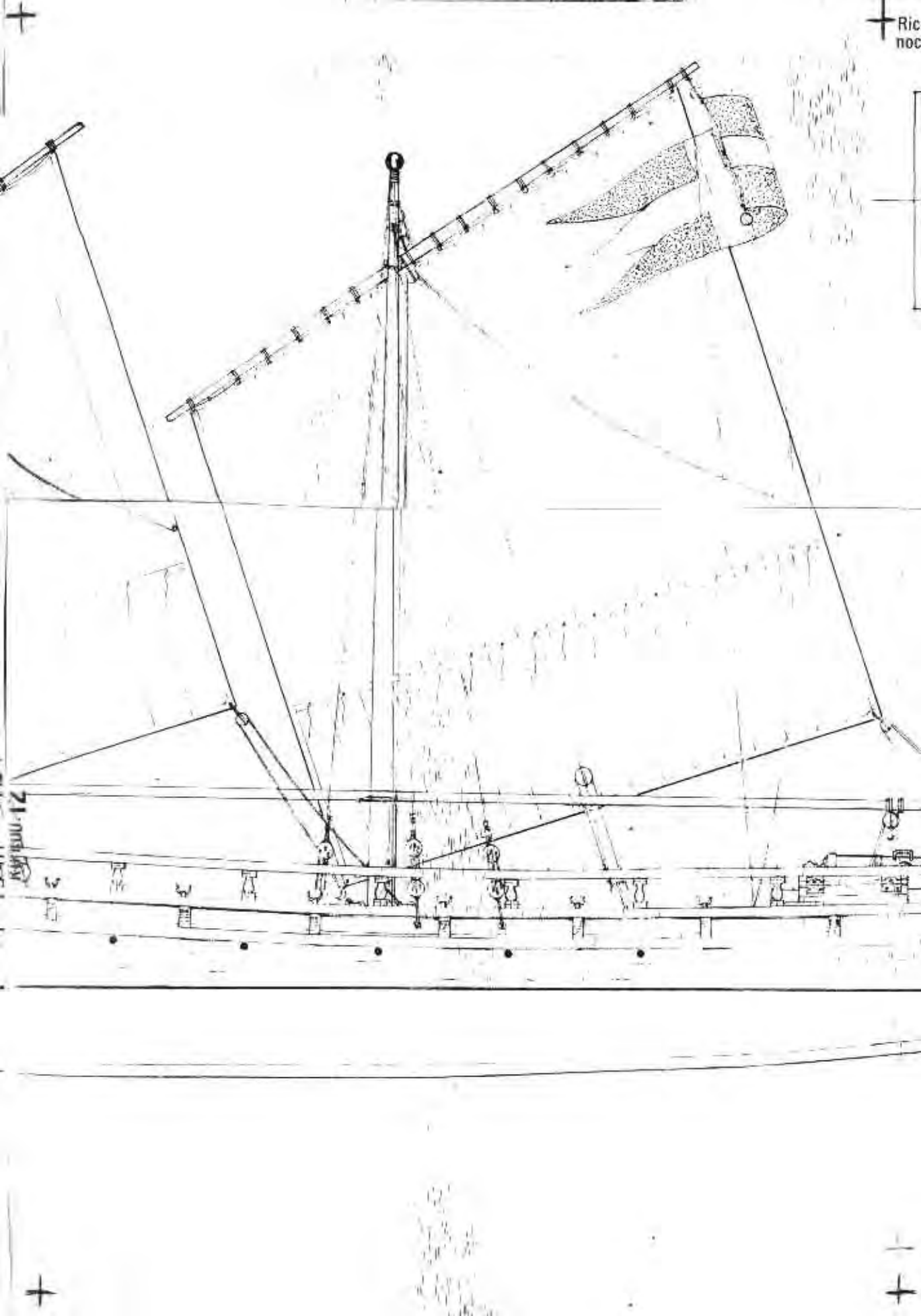




APPLICAZIONE MENSOLE h-i

Canestrelli art.4000/03
e occhielli senza vite art.4704

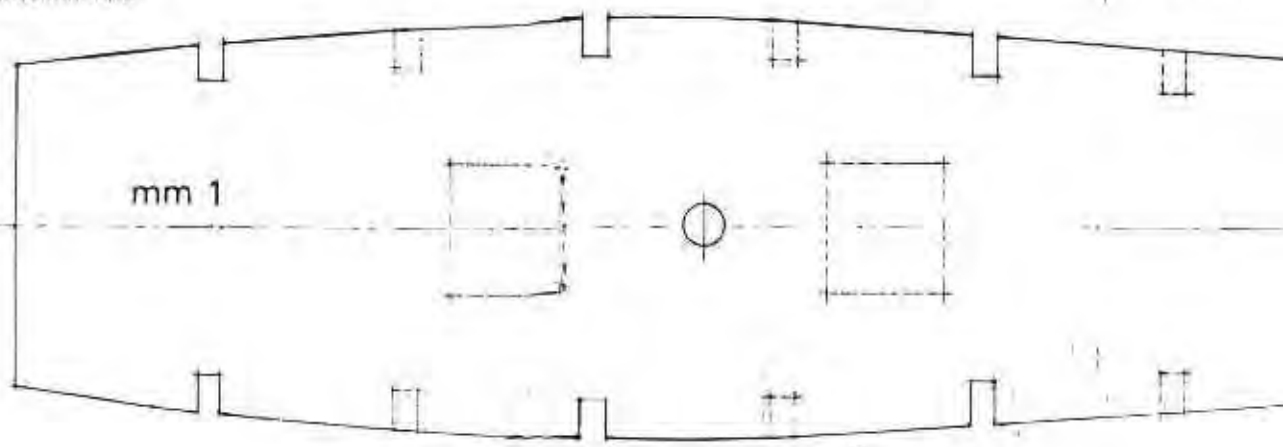




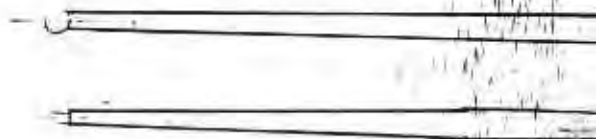
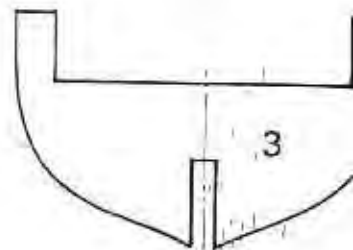
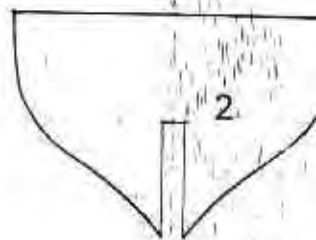
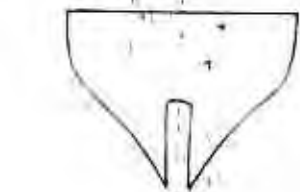
21

Ricoprire con listelli
noce mm. 1x3

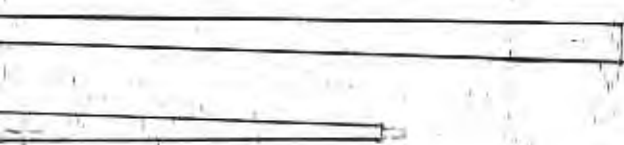
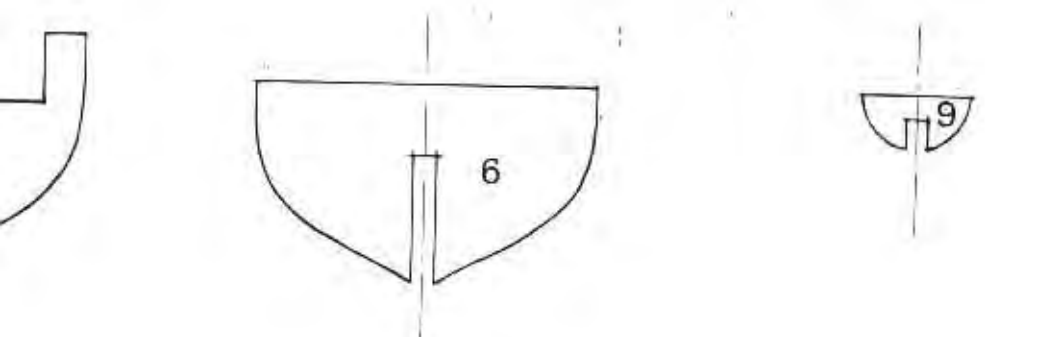
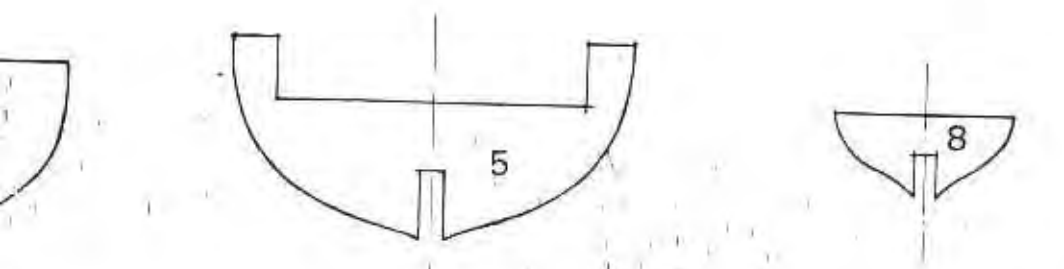
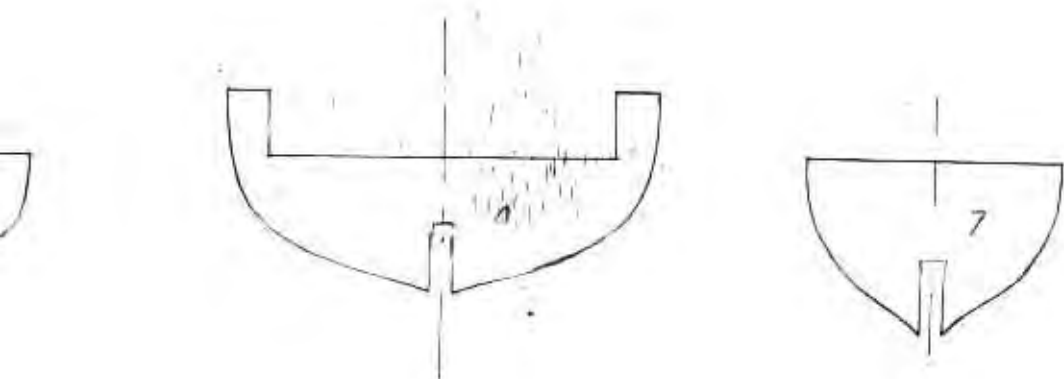
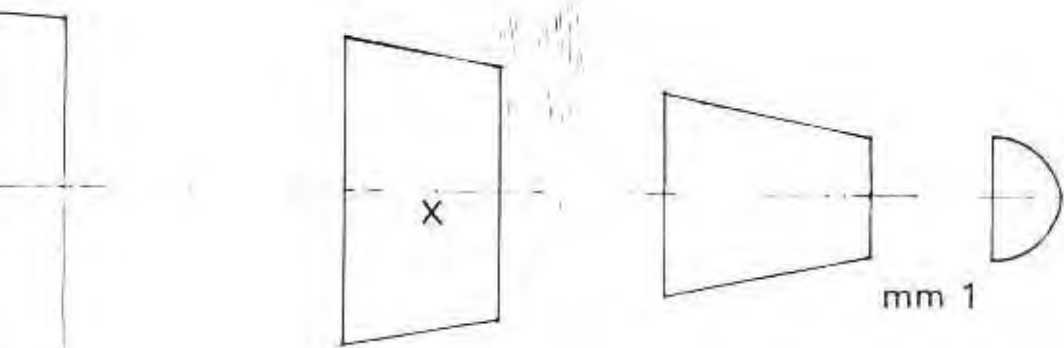
SOTTOPONTI

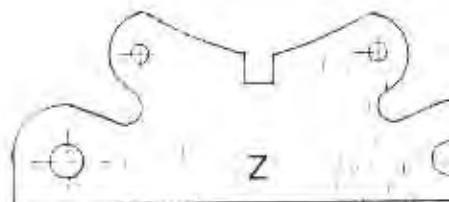
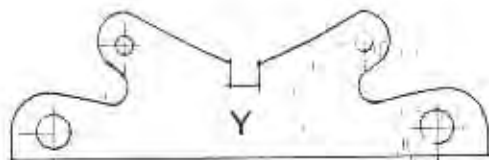
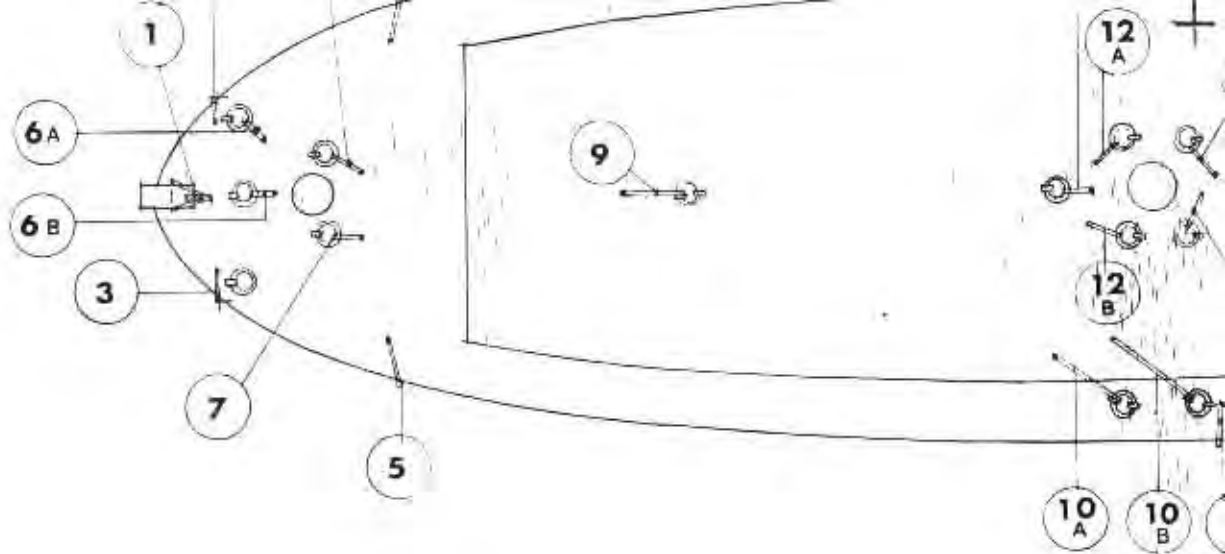


BANDIERA
da ricavare da lastra di legno o stoffa
verniciare croce gialla il campo blu



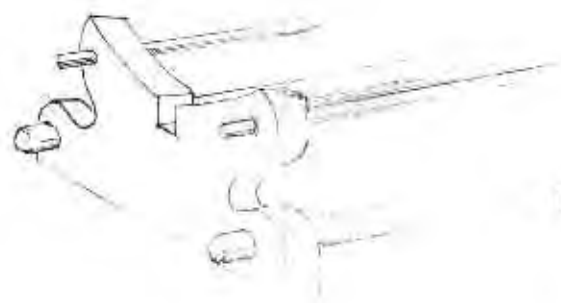
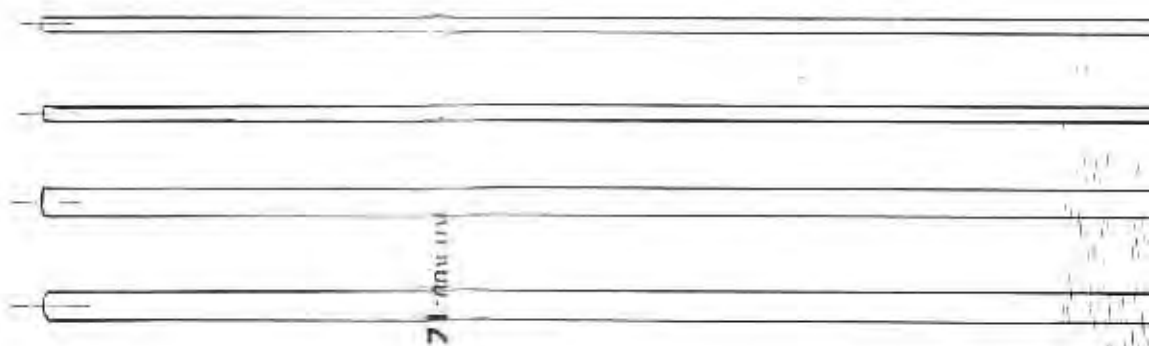
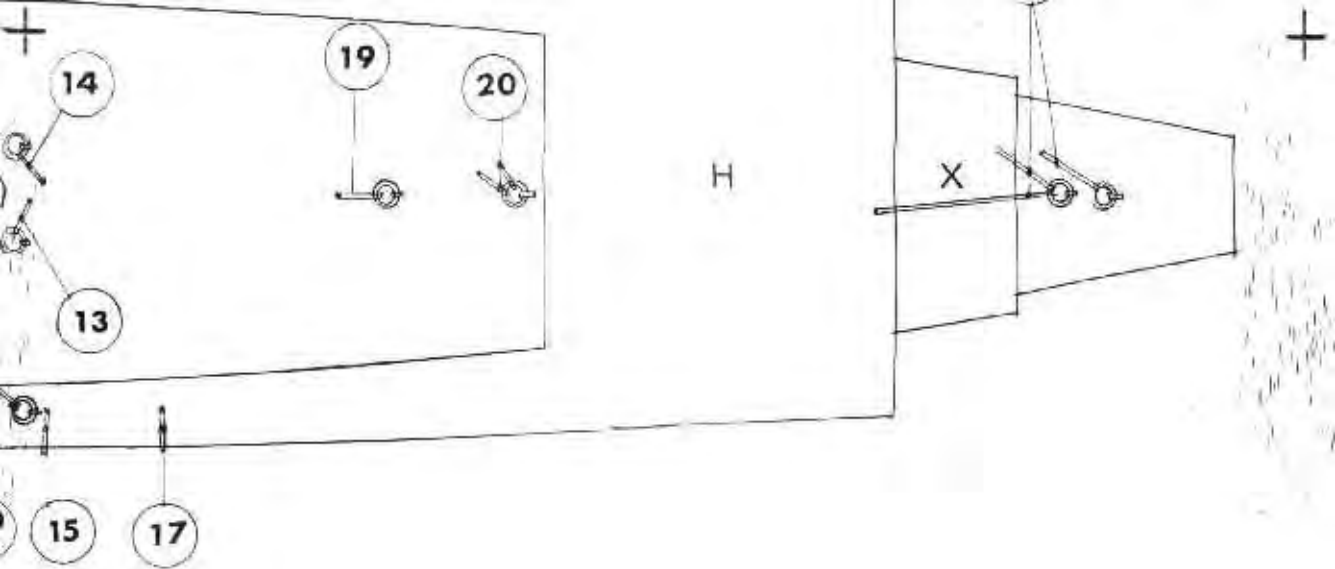
PEZZO H spessore mm. 1



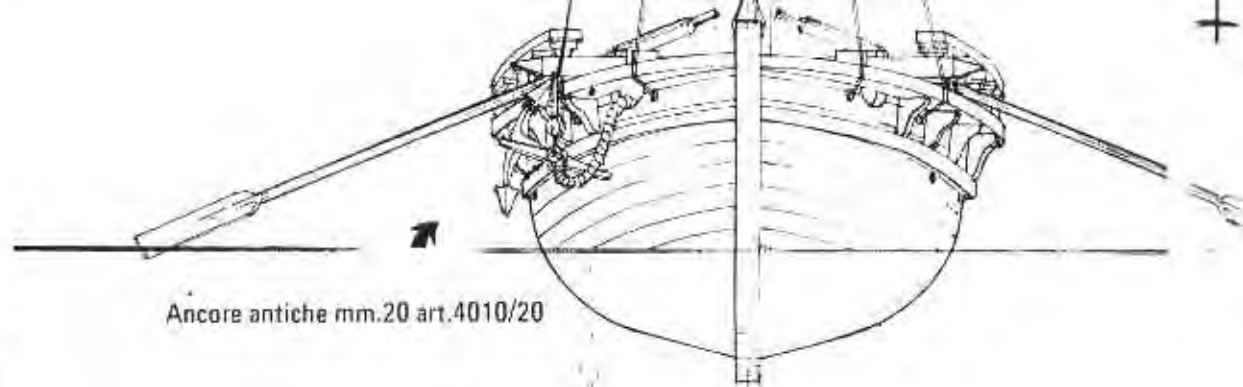


BASAMENTO mm. 3



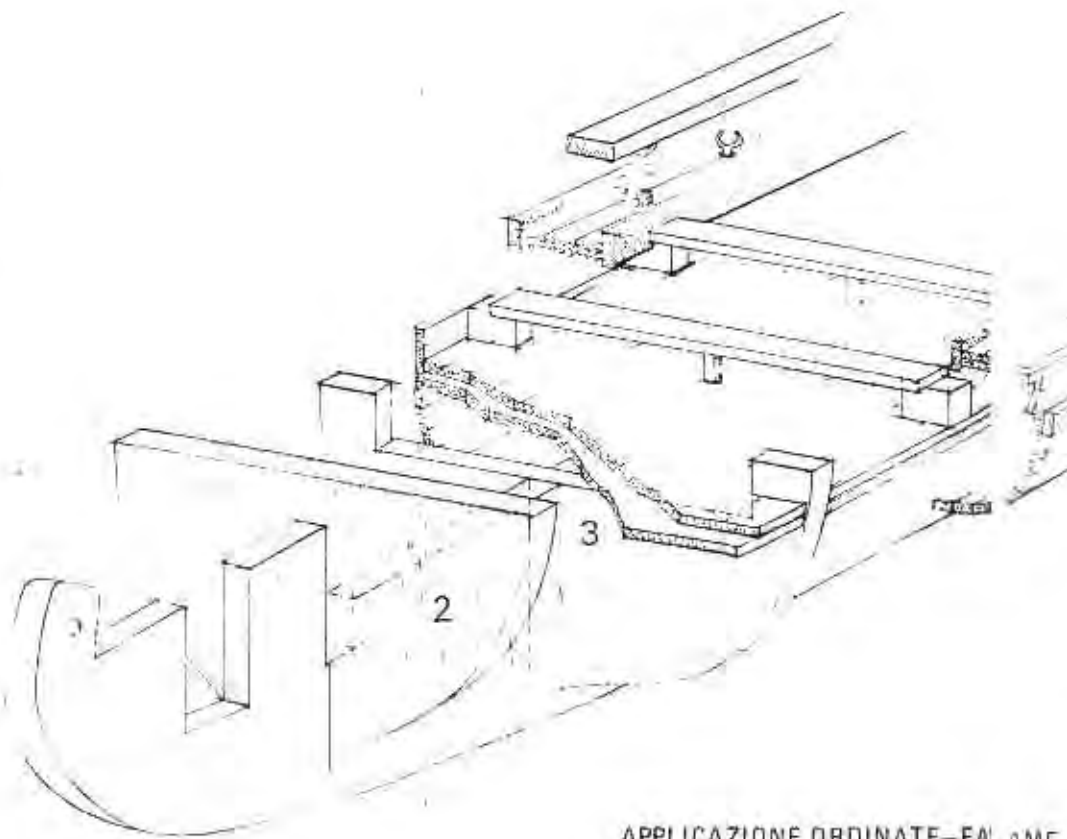
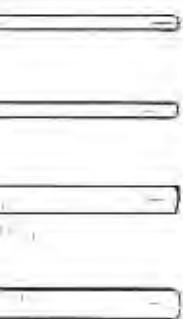


MONTAGGIO BASAMENTO



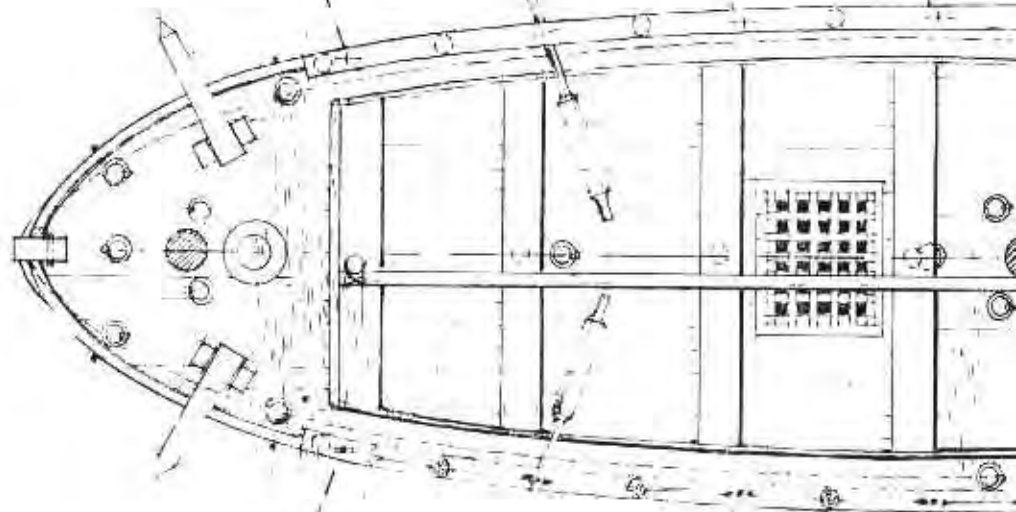
Ancore antiche mm.20 art.4010/20

VISTA DI PRUA

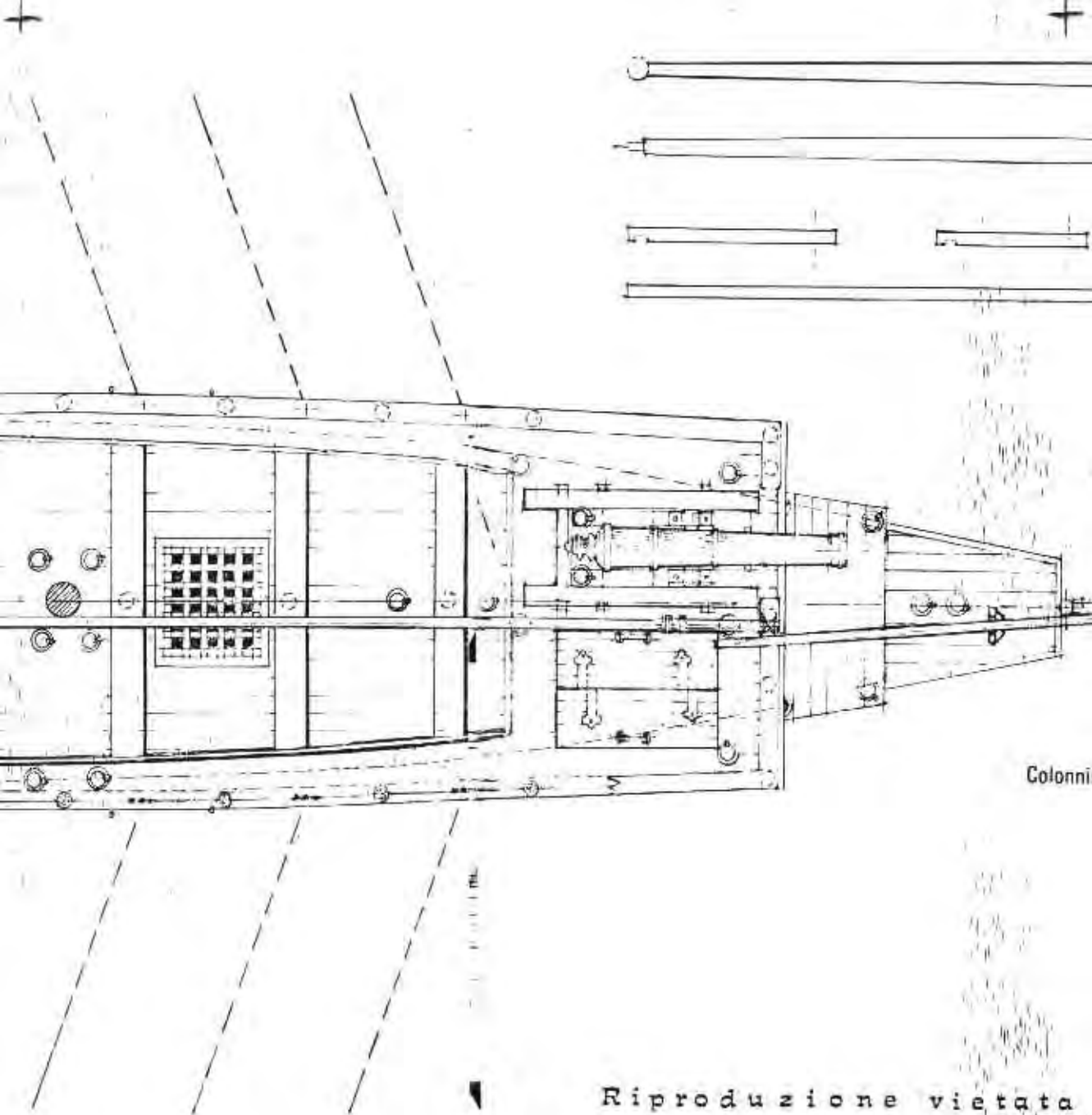


APPLICAZIONE ORDINATE-FALAME-

Remi art. 4306



AME-BANCHI-MANCORRENTI

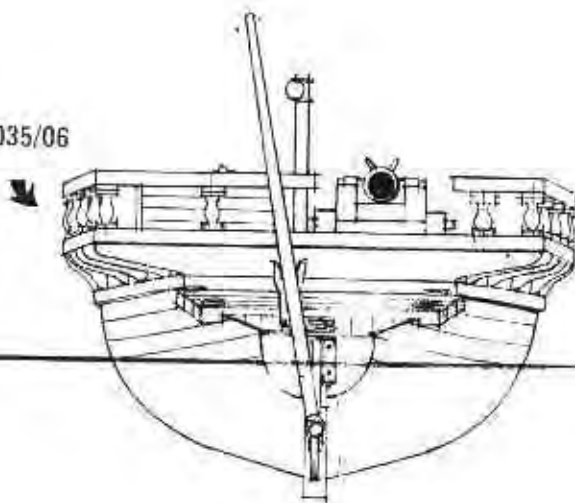


Colonna

Riproduzione vietata

ALBERATURA E PENNONI
da ricavare come da disegno in scala 1:1

laminine noce mm.6 art.4035/06



VISTA DI POPPA